

Datasheet for ABIN7308020

anti-MCM6 antibody**3** Images[Go to Product page](#)

Overview

Quantity:	100 µL
Target:	MCM6
Reactivity:	Human, Mouse, Rat
Host:	Rabbit
Clonality:	Polyclonal
Conjugate:	This MCM6 antibody is un-conjugated
Application:	Western Blotting (WB), Immunohistochemistry (IHC), Immunofluorescence (IF), Immunochromatography (IC)

Product Details

Purpose:	Rabbit polyclonal antibody to MCM6
Immunogen:	Recombinant full length protein of human MCM6
Specificity:	Recognizes endogenous levels of MCM6 protein.
Characteristics:	Rabbit polyclonal antibody to MCM6
Purification:	The antibody was purified by immunogen affinity chromatography.

Target Details

Target:	MCM6
Alternative Name:	MCM6 (MCM6 Products)
Background:	DNA replication licensing factor MCM6, p105MCM

Target Details

Gene ID:	4175, 17219
UniProt:	Q14566 , P97311 , Q62724
Pathways:	DNA Damage Repair , Mitotic G1-G1/S Phases , DNA Replication , Synthesis of DNA

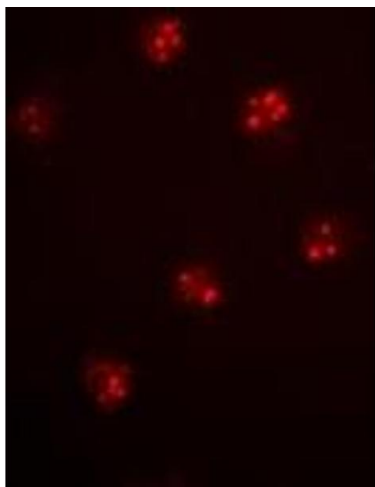
Application Details

Application Notes:	WB (1:500 - 1:2000), IH (1:50 - 1:200), IF/IC (1:50 - 1:200)
Restrictions:	For Research Use only

Handling

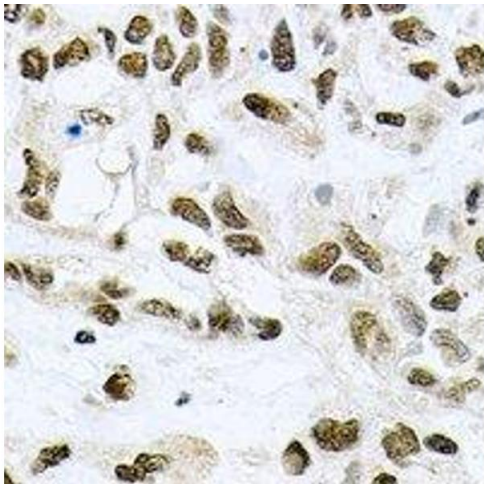
Format:	Liquid
Buffer:	Liquid in 0.42 % Potassium phosphate, 0.87 % Sodium chloride, pH 7.3, 30 % glycerol, and 0.01 % sodium azide.
Preservative:	Sodium azide
Precaution of Use:	This product contains Sodium azide: a POISONOUS AND HAZARDOUS SUBSTANCE which should be handled by trained staff only.
Storage:	-20 °C
Storage Comment:	Shipped at 4°C. Upon delivery aliquot and store at -20°C for one year. Avoid freeze/thaw cycles.
Expiry Date:	12 months

Images



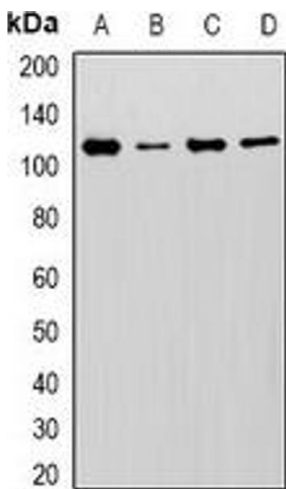
Immunofluorescence

Image 1. Immunofluorescent analysis of MCM6 staining in Hela cells. Formalin-fixed cells were permeabilized with 0.1% Triton X-100 in TBS for 5-10 minutes and blocked with 3% BSA-PBS for 30 minutes at room temperature. Cells were probed with the primary antibody i



Immunohistochemistry

Image 2. Immunohistochemical analysis of MCM6 staining in human lung cancer formalin fixed paraffin embedded tissue section. The section was pre-treated using heat mediated antigen retrieval with sodium citrate buffer (pH 6.0). The section was then incubated with



Western Blotting

Image 3. Western blot analysis of MCM6 expression in U251 (A), Hela (B), Jurkat (C), mouse spleen (D) whole cell lysates.