



Datasheet for ABIN7308026

## anti-GBL antibody



[Go to Product page](#)

### 2 Images

#### Overview

Quantity:	100 µL
Target:	GBL
Reactivity:	Human, Mouse, Rat
Host:	Rabbit
Clonality:	Polyclonal
Conjugate:	This GBL antibody is un-conjugated
Application:	Western Blotting (WB), Immunofluorescence (IF), Immunochromatography (IC)

#### Product Details

Purpose:	Rabbit polyclonal antibody to GBL
Immunogen:	Recombinant full length protein of human GBL
Specificity:	Recognizes endogenous levels of GBL protein.
Characteristics:	Rabbit polyclonal antibody to GBL
Purification:	The antibody was purified by immunogen affinity chromatography.

#### Target Details

Target:	GBL
Alternative Name:	GBL ( <a href="#">GBL Products</a> )
Background:	GBL, LST8, Target of rapamycin complex subunit LST8, TORC subunit LST8, G protein beta subunit-like, Gable, Protein GbetaL, Mammalian lethal with SEC13 protein 8, mLST8

## Target Details

---

Gene ID: 64223, 56716, 64226

UniProt: [Q9BVC4](#), [Q9DCJ1](#), [Q9Z2K5](#)

Pathways: [PI3K-Akt Signaling](#), [RTK Signaling](#), [Fc-epsilon Receptor Signaling Pathway](#), [EGFR Signaling Pathway](#), [Neurotrophin Signaling Pathway](#), [Regulation of Actin Filament Polymerization](#), [Autophagy](#), [CXCR4-mediated Signaling Events](#), [BCR Signaling](#), [Warburg Effect](#)

## Application Details

---

Application Notes: WB (1:500 - 1:2000), IF/IC (1:10 - 1:100)

Restrictions: For Research Use only

## Handling

---

Format: Liquid

Buffer: Liquid in 0.42 % Potassium phosphate, 0.87 % Sodium chloride, pH 7.3, 30 % glycerol, and 0.01 % sodium azide.

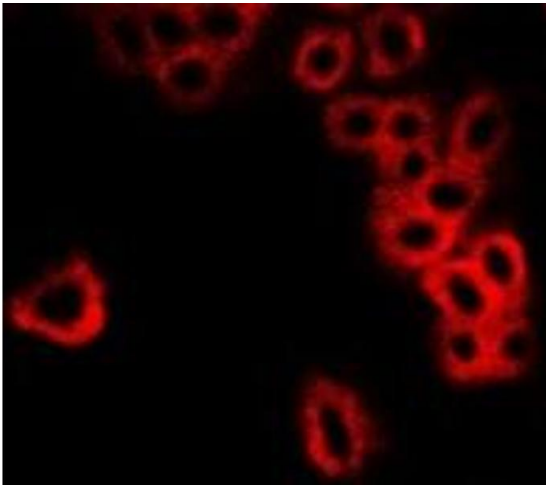
Preservative: Sodium azide

Precaution of Use: This product contains Sodium azide: a POISONOUS AND HAZARDOUS SUBSTANCE which should be handled by trained staff only.

Storage: -20 °C

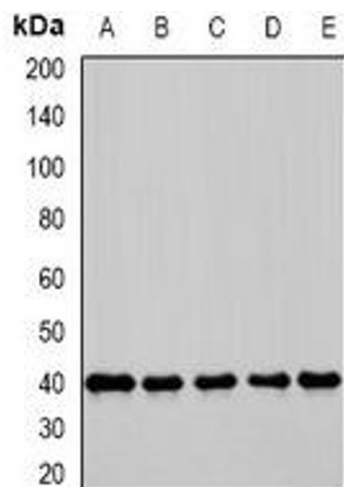
Storage Comment: Shipped at 4°C. Upon delivery aliquot and store at -20°C for one year. Avoid freeze/thaw cycles.

Expiry Date: 12 months



### Immunofluorescence

**Image 1.** Immunofluorescent analysis of GBL staining in MCF7 cells. Formalin-fixed cells were permeabilized with 0.1% Triton X-100 in TBS for 5-10 minutes and blocked with 3% BSA-PBS for 30 minutes at room temperature. Cells were probed with the primary antibody in



### Western Blotting

**Image 2.** Western blot analysis of GBL expression in K562 (A), HepG2 (B), COS7 (C), mouse testis (D), mouse spleen (E) whole cell lysates.