



[Go to Product page](#)

Datasheet for ABIN7308044

## anti-MYL2 antibody

### 2 Images

#### Overview

Quantity:	100 µL
Target:	MYL2
Reactivity:	Human, Mouse, Rat
Host:	Rabbit
Clonality:	Polyclonal
Conjugate:	This MYL2 antibody is un-conjugated
Application:	Western Blotting (WB), Immunofluorescence (IF), Immunochromatography (IC)

#### Product Details

Purpose:	Rabbit polyclonal antibody to MYL2
Immunogen:	Recombinant full length protein of human MYL2
Specificity:	Recognizes endogenous levels of MYL2 protein.
Characteristics:	Rabbit polyclonal antibody to MYL2
Purification:	The antibody was purified by immunogen affinity chromatography.

#### Target Details

Target:	MYL2
Alternative Name:	MYL2 ( <a href="#">MYL2 Products</a> )
Background:	Myosin regulatory light chain 2, ventricular/cardiac muscle isoform, MLC-2, MLC-2v
Gene ID:	4633, 17906, 363925

## Target Details

UniProt:	<a href="#">P10916</a> , <a href="#">P51667</a> , <a href="#">P08733</a>
Pathways:	<a href="#">Myometrial Relaxation and Contraction</a>

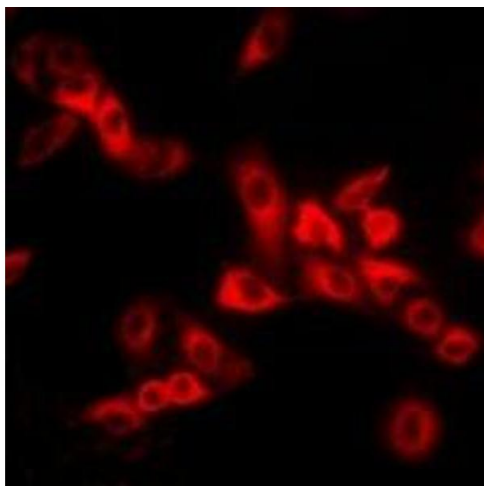
## Application Details

Application Notes:	WB (1:500 - 1:2000), IF/IC (1:50 - 1:100)
Restrictions:	For Research Use only

## Handling

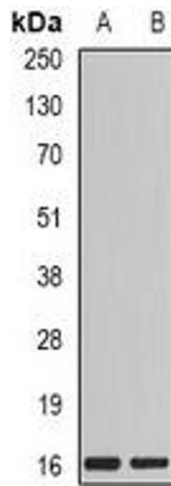
Format:	Liquid
Buffer:	Liquid in 0.42 % Potassium phosphate, 0.87 % Sodium chloride, pH 7.3, 30 % glycerol, and 0.01 % sodium azide.
Preservative:	Sodium azide
Precaution of Use:	This product contains Sodium azide: a POISONOUS AND HAZARDOUS SUBSTANCE which should be handled by trained staff only.
Storage:	-20 °C
Storage Comment:	Shipped at 4°C. Upon delivery aliquot and store at -20°C for one year. Avoid freeze/thaw cycles.
Expiry Date:	12 months

## Images



### Immunofluorescence

**Image 1.** Immunofluorescent analysis of MYL2 staining in MCF7 cells. Formalin-fixed cells were permeabilized with 0.1% Triton X-100 in TBS for 5-10 minutes and blocked with 3% BSA-PBS for 30 minutes at room temperature. Cells were probed with the primary antibody i



### Western Blotting

**Image 2.** Western blot analysis of MYL2 expression in MCF7 (A), mouse skeletal muscle (B) whole cell lysates.