



[Go to Product page](#)

Datasheet for ABIN7308060

anti-NudE Neurodevelopment Protein 1 (NDE1) antibody

2 Images

Overview

Quantity:	100 µL
Target:	NudE Neurodevelopment Protein 1 (NDE1)
Reactivity:	Human, Mouse
Host:	Rabbit
Clonality:	Polyclonal
Conjugate:	Un-conjugated
Application:	Western Blotting (WB), Immunofluorescence (IF), Immunochromatography (IC)

Product Details

Purpose:	Rabbit polyclonal antibody to NUDE
Immunogen:	Recombinant full length protein of human NUDE
Specificity:	Recognizes endogenous levels of NUDE protein.
Characteristics:	Rabbit polyclonal antibody to NUDE
Purification:	The antibody was purified by immunogen affinity chromatography.

Target Details

Target:	NudE Neurodevelopment Protein 1 (NDE1)
Alternative Name:	NUDE (NDE1 Products)
Background:	NUDE, Nuclear distribution protein nudE homolog 1, NudE
Gene ID:	54820, 67203

Target Details

UniProt: [Q9NXR1, Q9CZA6](#)

Pathways: [M Phase](#)

Application Details

Application Notes: WB (1:500 - 1:2000), IF/IC (1:50 - 1:100)

Restrictions: For Research Use only

Handling

Format: Liquid

Buffer: Liquid in 0.42 % Potassium phosphate, 0.87 % Sodium chloride, pH 7.3, 30 % glycerol, and 0.01 % sodium azide.

Preservative: Sodium azide

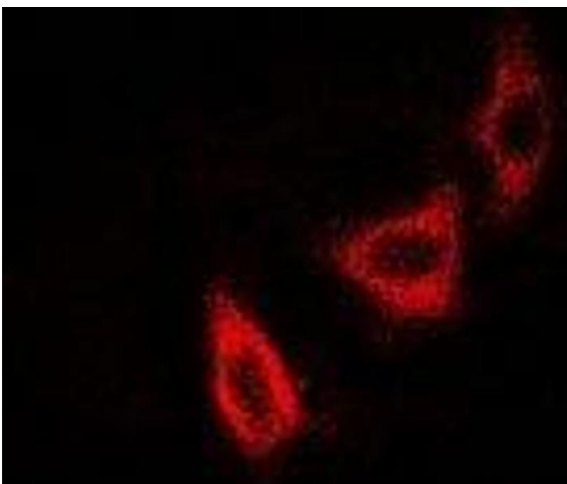
Precaution of Use: This product contains Sodium azide: a POISONOUS AND HAZARDOUS SUBSTANCE which should be handled by trained staff only.

Storage: -20 °C

Storage Comment: Shipped at 4°C. Upon delivery aliquot and store at -20°C for one year. Avoid freeze/thaw cycles.

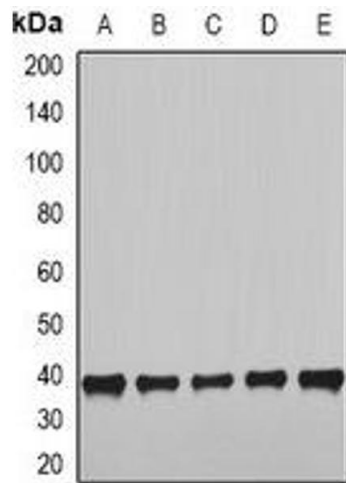
Expiry Date: 12 months

Images



Immunofluorescence

Image 1. Immunofluorescent analysis of NUDE staining in SKOV3 cells. Formalin-fixed cells were permeabilized with 0.1% Triton X-100 in TBS for 5-10 minutes and blocked with 3% BSA-PBS for 30 minutes at room temperature. Cells were probed with the primary antibody



Western Blotting

Image 2. Western blot analysis of NUDE expression in HepG2 (A), SKOV3 (B), MCF7 (C), mouse heart (D), mouse lung (E) whole cell lysates.