

Datasheet for ABIN7308100

anti-P2RX5 antibody**3** Images[Go to Product page](#)

Overview

| | |
|--------------|--|
| Quantity: | 100 µL |
| Target: | P2RX5 |
| Reactivity: | Human, Rat, Mouse |
| Host: | Rabbit |
| Clonality: | Polyclonal |
| Conjugate: | This P2RX5 antibody is un-conjugated |
| Application: | Western Blotting (WB), Immunohistochemistry (IHC), Immunofluorescence (IF), Immunochromatography (IC) |

Product Details

| | |
|------------------|---|
| Purpose: | Rabbit polyclonal antibody to LRH-1 |
| Immunogen: | Recombinant full length protein of human LRH-1 |
| Specificity: | Recognizes endogenous levels of LRH-1 protein. |
| Characteristics: | Rabbit polyclonal antibody to LRH-1 |
| Purification: | The antibody was purified by immunogen affinity chromatography. |

Target Details

| | |
|-------------------|---|
| Target: | P2RX5 |
| Alternative Name: | LRH-1 (P2RX5 Products) |
| Background: | B1F, CPF, FTF, Nuclear receptor subfamily 5 group A member 2, Alpha-1-fetoprotein |

Target Details

| | |
|----------|---|
| | transcription factor, B1-binding factor, hB1F, CYP7A promoter-binding factor, Hepatocytic transcription factor, Liver receptor homolog 1, LRH-1 |
| Gene ID: | 2494, 26424, 60349 |
| UniProt: | O00482 , P45448 , Q9QWM1 |

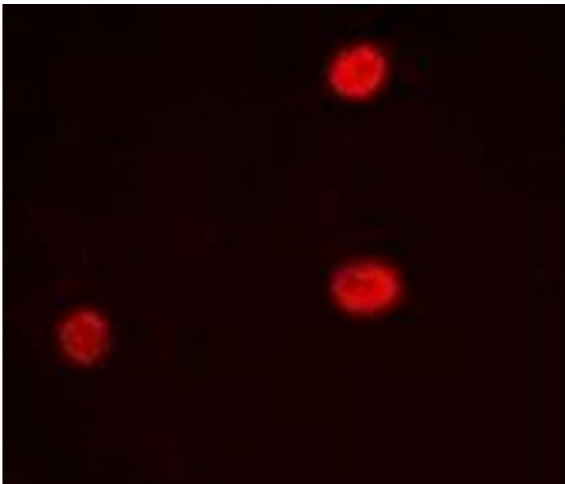
Application Details

| | |
|--------------------|--|
| Application Notes: | WB (1:500 - 1:2000), IH (1:50 - 1:200), IF/IC (1:50 - 1:200) |
| Restrictions: | For Research Use only |

Handling

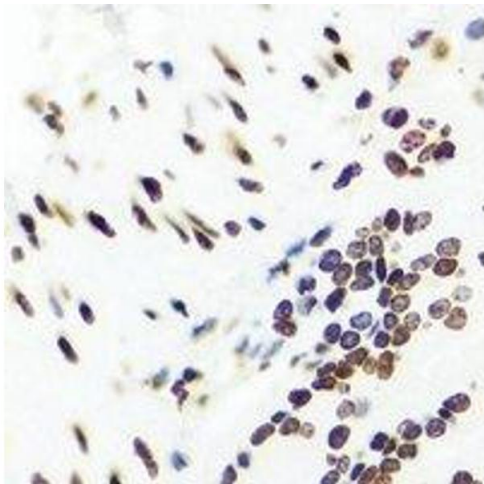
| | |
|--------------------|--|
| Format: | Liquid |
| Buffer: | Liquid in 0.42 % Potassium phosphate, 0.87 % Sodium chloride, pH 7.3, 30 % glycerol, and 0.01 % sodium azide. |
| Preservative: | Sodium azide |
| Precaution of Use: | This product contains Sodium azide: a POISONOUS AND HAZARDOUS SUBSTANCE which should be handled by trained staff only. |
| Storage: | -20 °C |
| Storage Comment: | Shipped at 4°C. Upon delivery aliquot and store at -20°C for one year. Avoid freeze/thaw cycles. |
| Expiry Date: | 12 months |

Images



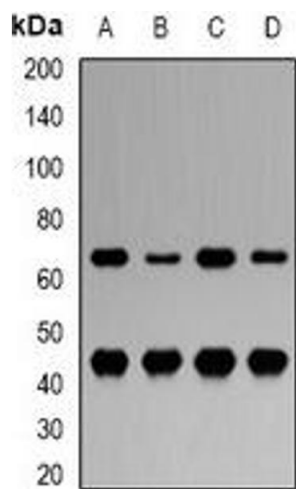
Immunofluorescence

Image 1. Immunofluorescent analysis of LRH-1 staining in Hela cells. Formalin-fixed cells were permeabilized with 0.1% Triton X-100 in TBS for 5-10 minutes and blocked with 3% BSA-PBS for 30 minutes at room temperature. Cells were probed with the primary antibody



Immunohistochemistry

Image 2.



Western Blotting

Image 3. Western blot analysis of LRH-1 expression in MCF7 (A), Hela (B), mouse liver (C), rat liver (D) whole cell lysates.