

Datasheet for ABIN7308120

anti-ORC6 antibody**2** Images[Go to Product page](#)

Overview

Quantity:	100 µL
Target:	ORC6
Reactivity:	Human
Host:	Rabbit
Clonality:	Polyclonal
Conjugate:	This ORC6 antibody is un-conjugated
Application:	Western Blotting (WB), Immunofluorescence (IF), Immunochromatography (IC)

Product Details

Purpose:	Rabbit polyclonal antibody to ORC6
Immunogen:	Recombinant full length protein of human ORC6
Specificity:	Recognizes endogenous levels of ORC6 protein.
Characteristics:	Rabbit polyclonal antibody to ORC6
Purification:	The antibody was purified by immunogen affinity chromatography.

Target Details

Target:	ORC6
Alternative Name:	ORC6 (ORC6 Products)
Background:	ORC6L, Origin recognition complex subunit 6
Gene ID:	23594

Target Details

UniProt:	Q9Y5N6
Pathways:	Mitotic G1-G1/S Phases , DNA Replication , M Phase , Synthesis of DNA

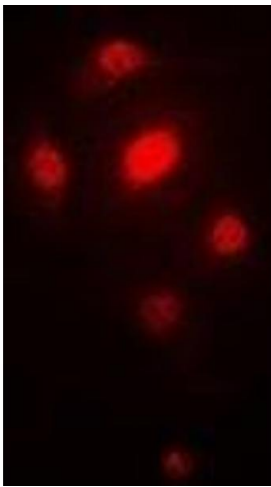
Application Details

Application Notes:	WB (1:500 - 1:2000), IF/IC (1:50 - 1:200)
Restrictions:	For Research Use only

Handling

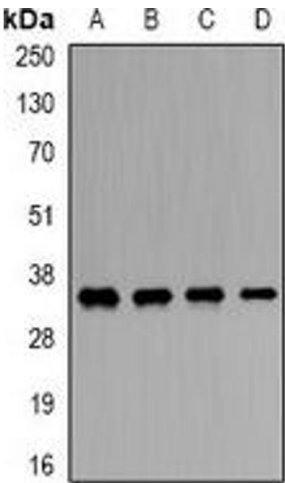
Format:	Liquid
Buffer:	Liquid in 0.42 % Potassium phosphate, 0.87 % Sodium chloride, pH 7.3, 30 % glycerol, and 0.01 % sodium azide.
Preservative:	Sodium azide
Precaution of Use:	This product contains Sodium azide: a POISONOUS AND HAZARDOUS SUBSTANCE which should be handled by trained staff only.
Storage:	-20 °C
Storage Comment:	Shipped at 4°C. Upon delivery aliquot and store at -20°C for one year. Avoid freeze/thaw cycles.
Expiry Date:	12 months

Images



Immunofluorescence

Image 1. Immunofluorescent analysis of ORC6 staining in SW620 cells. Formalin-fixed cells were permeabilized with 0.1% Triton X-100 in TBS for 5-10 minutes and blocked with 3% BSA-PBS for 30 minutes at room temperature. Cells were probed with the primary antibody



Western Blotting

Image 2. Western blot analysis of ORC6 expression in SW620 (A), Hela (B), mouse liver (C), rat brain (D) whole cell lysates.