

Datasheet for ABIN7308184

anti-POLH antibody**2** Images[Go to Product page](#)

Overview

Quantity:	100 µL
Target:	POLH
Reactivity:	Human, Mouse, Rat
Host:	Rabbit
Clonality:	Polyclonal
Conjugate:	This POLH antibody is un-conjugated
Application:	Western Blotting (WB), Immunofluorescence (IF), Immunochromatography (IC)

Product Details

Purpose:	Rabbit polyclonal antibody to XPV
Immunogen:	Recombinant full length protein of human XPV
Specificity:	Recognizes endogenous levels of XPV protein.
Characteristics:	Rabbit polyclonal antibody to XPV
Purification:	The antibody was purified by immunogen affinity chromatography.

Target Details

Target:	POLH
Alternative Name:	XPV (POLH Products)
Background:	RAD30, RAD30A, XPV, DNA polymerase eta, RAD30 homolog A, Xeroderma pigmentosum variant type protein

Target Details

Gene ID:	5429, 80905
UniProt:	Q9Y253 , Q9JJN0
Pathways:	DNA Damage Repair

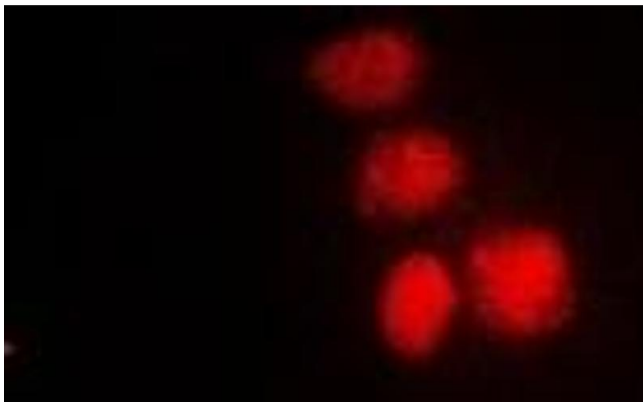
Application Details

Application Notes:	WB (1:500 - 1:2000), IF/IC (1:50 - 1:200)
Restrictions:	For Research Use only

Handling

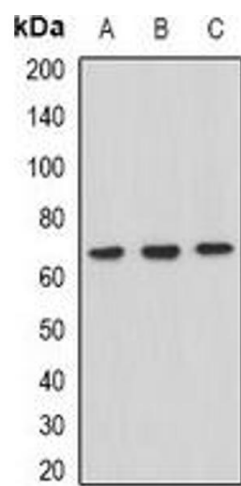
Format:	Liquid
Buffer:	Liquid in 0.42 % Potassium phosphate, 0.87 % Sodium chloride, pH 7.3, 30 % glycerol, and 0.01 % sodium azide.
Preservative:	Sodium azide
Precaution of Use:	This product contains Sodium azide: a POISONOUS AND HAZARDOUS SUBSTANCE which should be handled by trained staff only.
Storage:	-20 °C
Storage Comment:	Shipped at 4°C. Upon delivery aliquot and store at -20°C for one year. Avoid freeze/thaw cycles.
Expiry Date:	12 months

Images



Immunofluorescence

Image 1. Immunofluorescent analysis of XPV staining in HepG2 cells. Formalin-fixed cells were permeabilized with 0.1% Triton X-100 in TBS for 5-10 minutes and blocked with 3% BSA-PBS for 30 minutes at room temperature. Cells were probed with the primary antibody i



Western Blotting

Image 2. Western blot analysis of XPV expression in HeLa (A), HepG2 (B), Raji (C) whole cell lysates.