



[Go to Product page](#)

Datasheet for ABIN7308190

anti-POLR2D antibody

2 Images

Overview

Quantity:	100 µL
Target:	POLR2D
Reactivity:	Human, Mouse, Rat
Host:	Rabbit
Clonality:	Polyclonal
Conjugate:	This POLR2D antibody is un-conjugated
Application:	Western Blotting (WB), Immunofluorescence (IF), Immunochromatography (IC)

Product Details

Purpose:	Rabbit polyclonal antibody to POLR2D
Immunogen:	Recombinant full length protein of human POLR2D
Specificity:	Recognizes endogenous levels of POLR2D protein.
Characteristics:	Rabbit polyclonal antibody to POLR2D
Purification:	The antibody was purified by immunogen affinity chromatography.

Target Details

Target:	POLR2D
Alternative Name:	POLR2D (POLR2D Products)
Background:	DNA-directed RNA polymerase II subunit RPB4, RNA polymerase II subunit B4, DNA-directed RNA polymerase II subunit D, RNA polymerase II 16 kDa subunit, RPB16

Target Details

Gene ID:	5433, 69241
UniProt:	O15514, Q9D7M8
Pathways:	Regulatory RNA Pathways

Application Details

Application Notes:	WB (1:500 - 1:2000), IF/IC (1:10 - 1:100)
Restrictions:	For Research Use only

Handling

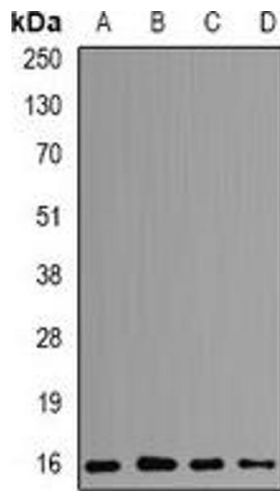
Format:	Liquid
Buffer:	Liquid in 0.42 % Potassium phosphate, 0.87 % Sodium chloride, pH 7.3, 30 % glycerol, and 0.01 % sodium azide.
Preservative:	Sodium azide
Precaution of Use:	This product contains Sodium azide: a POISONOUS AND HAZARDOUS SUBSTANCE which should be handled by trained staff only.
Storage:	-20 °C
Storage Comment:	Shipped at 4°C. Upon delivery aliquot and store at -20°C for one year. Avoid freeze/thaw cycles.
Expiry Date:	12 months

Images



Immunofluorescence

Image 1. Immunofluorescent analysis of POLR2D staining in SW620 cells. Formalin-fixed cells were permeabilized with 0.1% Triton X-100 in TBS for 5-10 minutes and blocked with 3% BSA-PBS for 30 minutes at room temperature. Cells were probed with the primary antibody.



Western Blotting

Image 2. Western blot analysis of POLR2D expression in MCF7 (A), SW620 (B), HepG2 (C), mouse spleen (D) whole cell lysates.