



[Go to Product page](#)

Datasheet for ABIN7308238

## anti-PSG1 antibody

### 3 Images

#### Overview

Quantity:	100 µL
Target:	PSG1
Reactivity:	Human
Host:	Rabbit
Clonality:	Polyclonal
Conjugate:	This PSG1 antibody is un-conjugated
Application:	Western Blotting (WB), Immunohistochemistry (IHC), Immunofluorescence (IF), Immunochromatography (IC)

#### Product Details

Purpose:	Rabbit polyclonal antibody to CD66f
Immunogen:	Recombinant full length protein of human CD66f
Specificity:	Recognizes endogenous levels of CD66f protein.
Characteristics:	Rabbit polyclonal antibody to CD66f
Purification:	The antibody was purified by immunogen affinity chromatography.

#### Target Details

Target:	PSG1
Alternative Name:	CD66f ( <a href="#">PSG1 Products</a> )
Background:	B1G1, PSBG1, PSGGA, Pregnancy-specific beta-1-glycoprotein 1, PS-beta-G-1, PSBG-1,

## Target Details

---

Pregnancy-specific glycoprotein 1, CD66 antigen-like family member F, Fetal liver non-specific cross-reactive antigen 1/2, FL-NCA-1/2, PSG95, Pregnancy-specific beta-1 glycoprotein C/D, PS-beta-C/D, CD66f

Gene ID: 5669

UniProt: [P11464](#)

## Application Details

---

Application Notes: WB (1:500 - 1:2000), IH (1:50 - 1:200), IF/IC (1:50 - 1:100)

Restrictions: For Research Use only

## Handling

---

Format: Liquid

Buffer: Liquid in 0.42 % Potassium phosphate, 0.87 % Sodium chloride, pH 7.3, 30 % glycerol, and 0.01 % sodium azide.

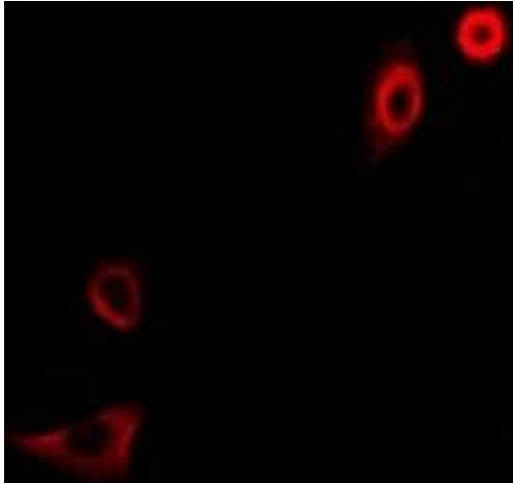
Preservative: Sodium azide

Precaution of Use: This product contains Sodium azide: a POISONOUS AND HAZARDOUS SUBSTANCE which should be handled by trained staff only.

Storage: -20 °C

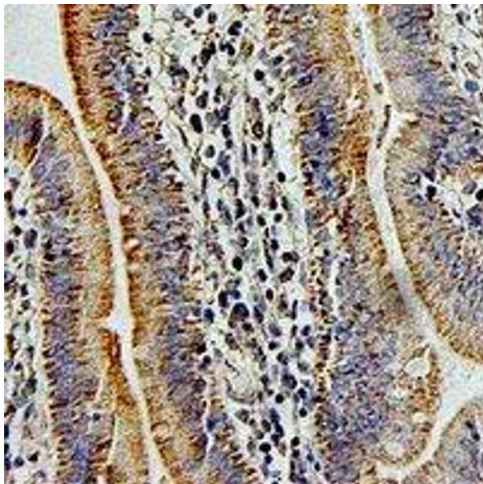
Storage Comment: Shipped at 4°C. Upon delivery aliquot and store at -20°C for one year. Avoid freeze/thaw cycles.

Expiry Date: 12 months



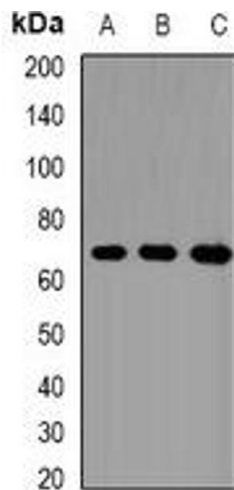
### Immunofluorescence

**Image 1.** Immunofluorescent analysis of CD66f staining in A549 cells. Formalin-fixed cells were permeabilized with 0.1% Triton X-100 in TBS for 5-10 minutes and blocked with 3% BSA-PBS for 30 minutes at room temperature. Cells were probed with the primary antibody



### Immunohistochemistry

**Image 2.**



### Western Blotting

**Image 3.** Western blot analysis of CD66f expression in SW480 (A), A549 (B), HeLa (C) whole cell lysates.