

Datasheet for ABIN7308262

**anti-RBBP5 antibody****3** Images[Go to Product page](#)

## Overview

Quantity:	100 µL
Target:	RBBP5
Reactivity:	Human, Mouse, Rat
Host:	Rabbit
Clonality:	Polyclonal
Conjugate:	This RBBP5 antibody is un-conjugated
Application:	Western Blotting (WB), Immunohistochemistry (IHC), Immunofluorescence (IF), Immunochromatography (IC)

## Product Details

Purpose:	Rabbit polyclonal antibody to RBBP5
Immunogen:	Recombinant full length protein of human RBBP5
Specificity:	Recognizes endogenous levels of RBBP5 protein.
Characteristics:	Rabbit polyclonal antibody to RBBP5
Purification:	The antibody was purified by immunogen affinity chromatography.

## Target Details

Target:	RBBP5
Alternative Name:	RBBP5 ( <a href="#">RBBP5 Products</a> )
Background:	RBQ3, Retinoblastoma-binding protein 5, RBBP-5, Retinoblastoma-binding protein RBQ-3

## Target Details

Gene ID: 5929, 213464

UniProt: [Q15291](#), [Q8BX09](#)

## Application Details

Application Notes: WB (1:500 - 1:2000), IH (1:50 - 1:200), IF/IC (1:50 - 1:100)

Restrictions: For Research Use only

## Handling

Format: Liquid

Buffer: Liquid in 0.42 % Potassium phosphate, 0.87 % Sodium chloride, pH 7.3, 30 % glycerol, and 0.01 % sodium azide.

Preservative: Sodium azide

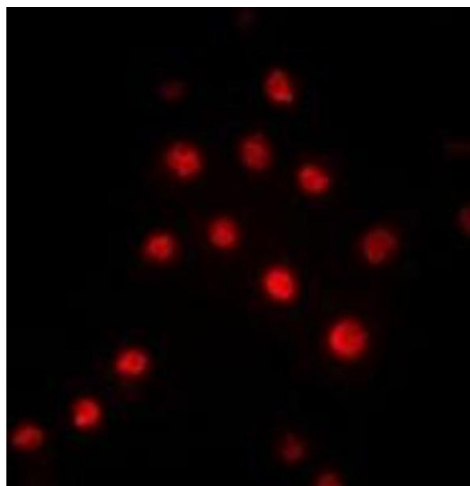
Precaution of Use: This product contains Sodium azide: a POISONOUS AND HAZARDOUS SUBSTANCE which should be handled by trained staff only.

Storage: -20 °C

Storage Comment: Shipped at 4°C. Upon delivery aliquot and store at -20°C for one year. Avoid freeze/thaw cycles.

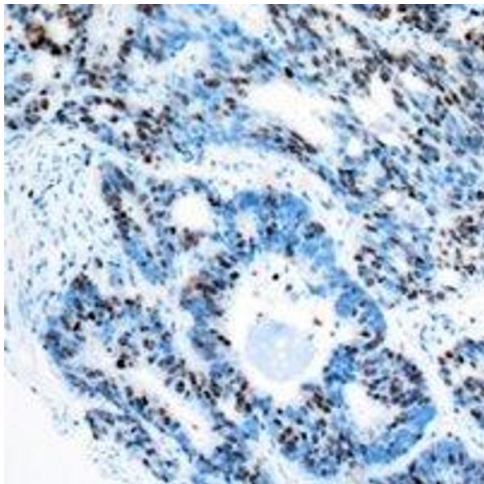
Expiry Date: 12 months

## Images



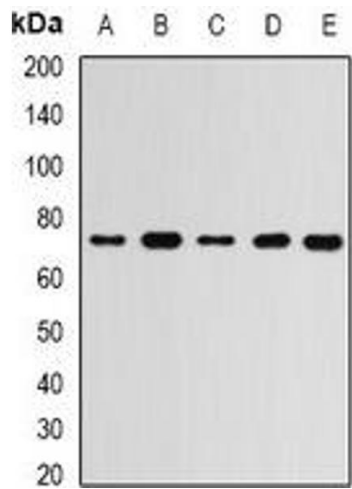
### Immunofluorescence

**Image 1.** Immunofluorescent analysis of RBBP5 staining in Hela cells. Formalin-fixed cells were permeabilized with 0.1% Triton X-100 in TBS for 5-10 minutes and blocked with 3% BSA-PBS for 30 minutes at room temperature. Cells were probed with the primary antibody



Immunohistochemistry

Image 2.



Western Blotting

**Image 3.** Western blot analysis of RBBP5 expression in MCF7 (A), Hela (B), mouse spleen (C), mouse brain (D), rat liver (E) whole cell lysates.