



[Go to Product page](#)

Datasheet for ABIN730828  
**anti-KRT4 antibody (AA 256-360)**

2 Images

Overview

Quantity:	100 µL
Target:	KRT4
Binding Specificity:	AA 256-360
Reactivity:	Human, Rat
Host:	Rabbit
Clonality:	Polyclonal
Conjugate:	This KRT4 antibody is un-conjugated
Application:	Western Blotting (WB), ELISA, Flow Cytometry (FACS), Immunohistochemistry (Paraffin-embedded Sections) (IHC (p)), Immunofluorescence (Cultured Cells) (IF (cc)), Immunofluorescence (Paraffin-embedded Sections) (IF (p)), Immunohistochemistry (Frozen Sections) (IHC (fro))

Product Details

Immunogen:	KLH conjugated synthetic peptide derived from human CK4
Isotype:	IgG
Cross-Reactivity:	Human, Rat
Predicted Reactivity:	Mouse,Dog,Cow,Horse,Rabbit
Purification:	Purified by Protein A.

Target Details

Target:	KRT4
---------	------

## Target Details

---

Alternative Name: CK4 ([KRT4 Products](#))

---

Background: Synonyms: CK 4, CK4, CYK 4, CK-4, CYK4, Cytokeratin4, Cytokeratin 4, Cytokeratin-4, FLJ31692, K4, Keratin 4, Keratin-4, Keratin type II cytoskeletal 4, Keratin4, KRT 4, KRT4, K2C4\_HUMAN, Keratin, type II cytoskeletal 4, K4, Type-II keratin Kb4.

Background: The protein encoded by this gene is a member of the keratin gene family. The type II cytokeratins consist of basic or neutral proteins which are arranged in pairs of heterotypic keratin chains coexpressed during differentiation of simple and stratified epithelial tissues. This type II cytokeratin is specifically expressed in differentiated layers of the mucosal and esophageal epithelia with family member KRT13. Mutations in these genes have been associated with White Sponge Nevus, characterized by oral, esophageal, and anal leukoplakia. The type II cytokeratins are clustered in a region of chromosome 12q12-q13. [provided by RefSeq, Jul 2008]

---

Molecular Weight: 57kDa

---

Gene ID: 3851

---

## Application Details

---

Application Notes: WB 1:300-5000  
ELISA 1:500-1000  
FCM 1:20-100  
IHC-P 1:200-400  
IHC-F 1:100-500  
IF(IHC-P) 1:50-200  
IF(IHC-F) 1:50-200  
IF(ICC) 1:50-200

---

Restrictions: For Research Use only

---

## Handling

---

Format: Liquid

---

Concentration: 1 µg/µL

---

Buffer: 0.01M TBS( pH 7.4) with 1 % BSA, 0.02 % Proclin300 and 50 % Glycerol.

---

Preservative: ProClin

---

Precaution of Use: This product contains ProClin: a POISONOUS AND HAZARDOUS SUBSTANCE, which should be

---

## Handling

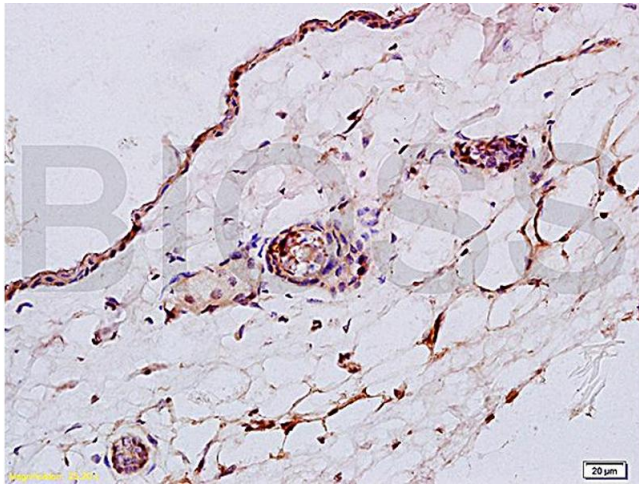
handled by trained staff only.

Storage: 4 °C,-20 °C

Storage Comment: Shipped at 4°C. Store at -20°C for one year. Avoid repeated freeze/thaw cycles.

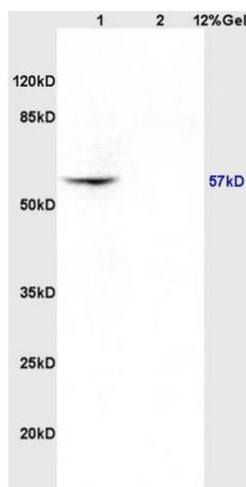
Expiry Date: 12 months

## Images



### Immunohistochemistry

**Image 1.** Formalin-fixed and paraffin embedded: rat skin tissue labeled with Anti-CK4 Polyclonal Antibody (ABIN730828) , Unconjugated at 1:200, followed by conjugation to the secondary antibody and DAB staining



### SDS-PAGE

**Image 2.** Lane 1: rat brain lysates Lane 2: rat kidney lysates probed with Anti CK4 Polyclonal Antibody, Unconjugated (ABIN730828) at 1:200 in 4 °C. Followed by conjugation to secondary antibody at 1:3000 90min in 37 °C. Predicted band 57kD. Observed band size: 57kD.