



[Go to Product page](#)

Datasheet for ABIN7308288

anti-RPLP1 antibody

3 Images

Overview

Quantity:	100 µL
Target:	RPLP1
Reactivity:	Human, Rat
Host:	Rabbit
Clonality:	Polyclonal
Conjugate:	This RPLP1 antibody is un-conjugated
Application:	Western Blotting (WB), Immunohistochemistry (IHC), Immunofluorescence (IF), Immunochromatography (IC)

Product Details

Purpose:	Rabbit polyclonal antibody to RPLP1
Immunogen:	Recombinant full length protein of human RPLP1
Specificity:	Recognizes endogenous levels of RPLP1 protein.
Characteristics:	Rabbit polyclonal antibody to RPLP1
Purification:	The antibody was purified by immunogen affinity chromatography.

Target Details

Target:	RPLP1
Alternative Name:	RPLP1 (RPLP1 Products)
Background:	RRP1, 60S acidic ribosomal protein P1

Target Details

Gene ID: 6176, 100360522, 140661

UniProt: [P05386](#), [P19944](#)

Application Details

Application Notes: WB (1:500 - 1:2000), IH (1:50 - 1:200), IF/IC (1:50 - 1:100)

Restrictions: For Research Use only

Handling

Format: Liquid

Buffer: Liquid in 0.42 % Potassium phosphate, 0.87 % Sodium chloride, pH 7.3, 30 % glycerol, and 0.01 % sodium azide.

Preservative: Sodium azide

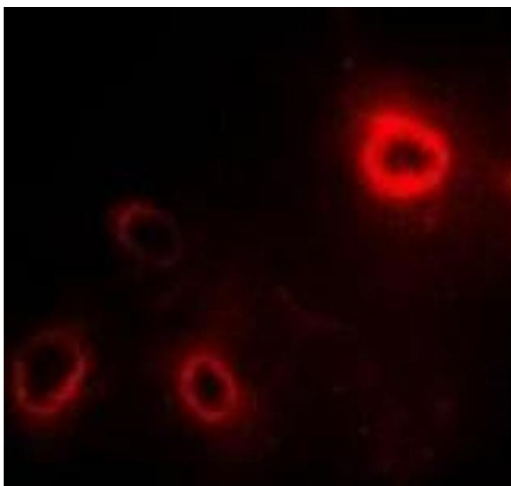
Precaution of Use: This product contains Sodium azide: a POISONOUS AND HAZARDOUS SUBSTANCE which should be handled by trained staff only.

Storage: -20 °C

Storage Comment: Shipped at 4°C. Upon delivery aliquot and store at -20°C for one year. Avoid freeze/thaw cycles.

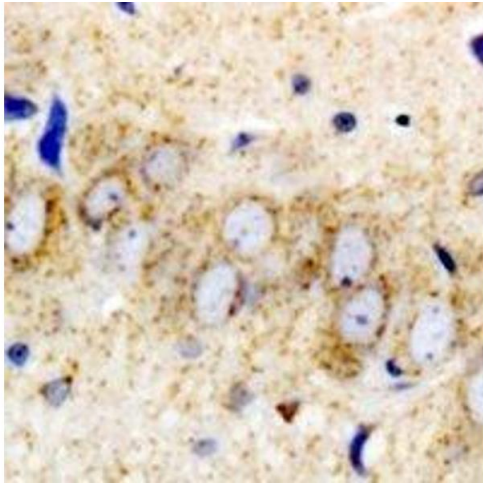
Expiry Date: 12 months

Images



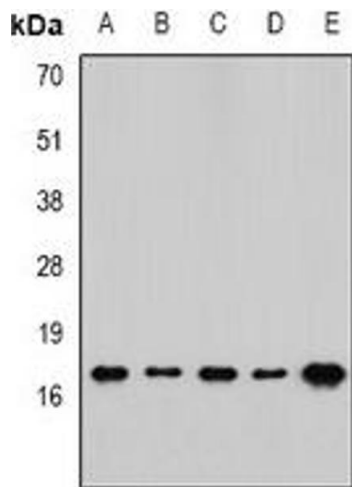
Immunofluorescence

Image 1. Immunofluorescent analysis of RPLP1 staining in SW480 cells. Formalin-fixed cells were permeabilized with 0.1% Triton X-100 in TBS for 5-10 minutes and blocked with 3% BSA-PBS for 30 minutes at room temperature. Cells were probed with the primary antibody



Immunohistochemistry

Image 2.



Western Blotting

Image 3. Western blot analysis of RPLP1 expression in SW480 (A), mouse spleen (B), mouse brain (C), rat lung (D), rat liver (E) whole cell lysates.