

Datasheet for ABIN7308324

anti-SFRP4 antibody

3 Images

[Go to Product page](#)

Overview

Quantity:	100 µL
Target:	SFRP4
Reactivity:	Human, Rat, Mouse
Host:	Rabbit
Clonality:	Polyclonal
Conjugate:	This SFRP4 antibody is un-conjugated
Application:	Western Blotting (WB), Immunohistochemistry (IHC), Immunofluorescence (IF), Immunochromatography (IC)

Product Details

Purpose:	Rabbit polyclonal antibody to SFRP4
Immunogen:	Recombinant full length protein of human SFRP4
Specificity:	Recognizes endogenous levels of SFRP4 protein.
Characteristics:	Rabbit polyclonal antibody to SFRP4
Purification:	The antibody was purified by immunogen affinity chromatography.

Target Details

Target:	SFRP4
Alternative Name:	SFRP4 (SFRP4 Products)
Background:	FRPHE, Secreted frizzled-related protein 4, sFRP-4, Frizzled protein, human endometrium, Fr pH

Target Details

	E
Gene ID:	6424, 20379, 89803
UniProt:	Q6FHJ7 , Q9Z1N6 , Q9JLS4
Pathways:	WNT Signaling

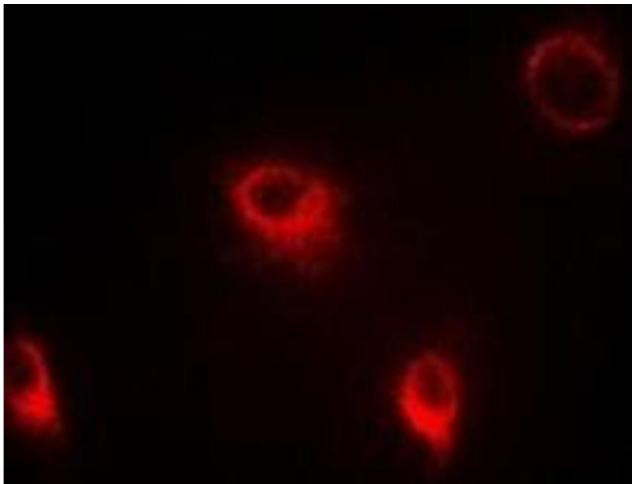
Application Details

Application Notes:	WB (1:500 - 1:2000), IH (1:50 - 1:200), IF/IC (1:50 - 1:100)
Restrictions:	For Research Use only

Handling

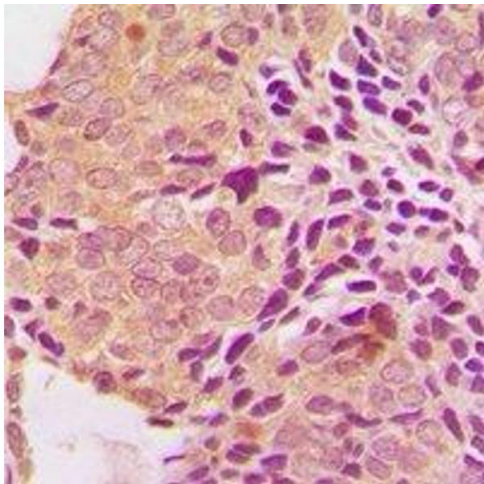
Format:	Liquid
Buffer:	Liquid in 0.42 % Potassium phosphate, 0.87 % Sodium chloride, pH 7.3, 30 % glycerol, and 0.01 % sodium azide.
Preservative:	Sodium azide
Precaution of Use:	This product contains Sodium azide: a POISONOUS AND HAZARDOUS SUBSTANCE which should be handled by trained staff only.
Storage:	-20 °C
Storage Comment:	Shipped at 4°C. Upon delivery aliquot and store at -20°C for one year. Avoid freeze/thaw cycles.
Expiry Date:	12 months

Images



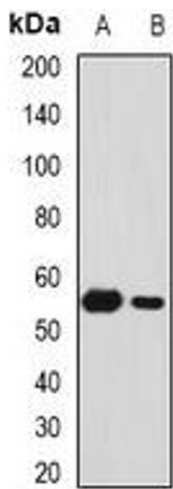
Immunofluorescence

Image 1. Immunofluorescent analysis of SFRP4 staining in Hela cells. Formalin-fixed cells were permeabilized with 0.1% Triton X-100 in TBS for 5-10 minutes and blocked with 3% BSA-PBS for 30 minutes at room temperature. Cells were probed with the primary antibody



Immunohistochemistry

Image 2.



Western Blotting

Image 3. Western blot analysis of SFRP4 expression in HepG2 (A), Hela (B) whole cell lysates.