

Datasheet for ABIN7308350
anti-SMARCB1 antibody



[Go to Product page](#)

3 Images

Overview

Quantity:	100 µL
Target:	SMARCB1
Reactivity:	Human, Mouse, Rat
Host:	Rabbit
Clonality:	Polyclonal
Conjugate:	This SMARCB1 antibody is un-conjugated
Application:	Western Blotting (WB), Immunohistochemistry (IHC), Immunofluorescence (IF), Immunoprecipitation (IP), Chromatin Immunoprecipitation (ChIP), Immunochromatography (IC)

Product Details

Purpose:	Rabbit polyclonal antibody to INI1
Immunogen:	Recombinant full length protein of human INI1
Specificity:	Recognizes endogenous levels of INI1 protein.
Characteristics:	Rabbit polyclonal antibody to INI1
Purification:	The antibody was purified by immunogen affinity chromatography.

Target Details

Target:	SMARCB1
Alternative Name:	INI1 (SMARCB1 Products)
Background:	BAF47, INI1, SNF5L1, SWI/SNF-related matrix-associated actin-dependent regulator of

Target Details

	chromatin subfamily B member 1, BRG1-associated factor 47, BAF47, Integrase interactor 1 protein, SNF5 homolog, hSNF5
Gene ID:	6598, 20587
UniProt:	Q12824 , Q9Z0H3

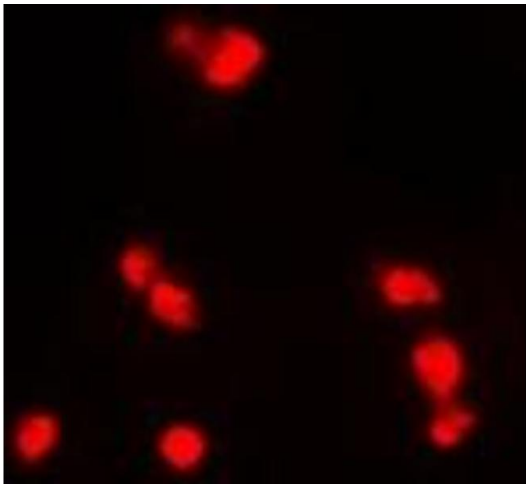
Application Details

Application Notes:	WB (1:500 - 1:2000), IH (1:50 - 1:200), IF/IC (1:50 - 1:200), IP (1:50 - 1:200), ChIP (1:20 - 1:100)
Restrictions:	For Research Use only

Handling

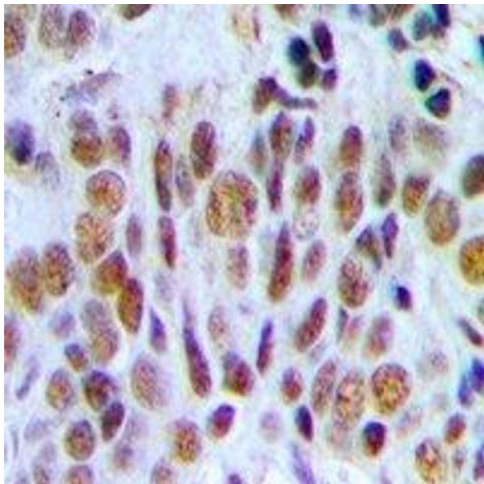
Format:	Liquid
Buffer:	Liquid in 0.42 % Potassium phosphate, 0.87 % Sodium chloride, pH 7.3, 30 % glycerol, and 0.01 % sodium azide.
Preservative:	Sodium azide
Precaution of Use:	This product contains Sodium azide: a POISONOUS AND HAZARDOUS SUBSTANCE which should be handled by trained staff only.
Storage:	-20 °C
Storage Comment:	Shipped at 4°C. Upon delivery aliquot and store at -20°C for one year. Avoid freeze/thaw cycles.
Expiry Date:	12 months

Images



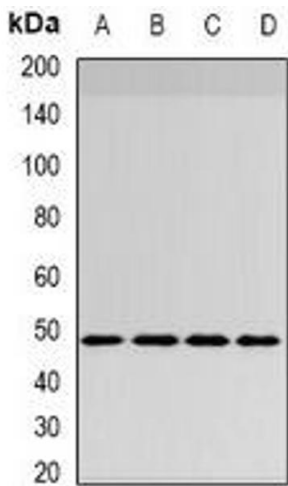
Immunofluorescence

Image 1. Immunofluorescent analysis of INI1 staining in MCF7 cells. Formalin-fixed cells were permeabilized with 0.1% Triton X-100 in TBS for 5-10 minutes and blocked with 3% BSA-PBS for 30 minutes at room temperature. Cells were probed with the primary antibody i



Immunohistochemistry

Image 2.



Western Blotting

Image 3. Western blot analysis of INI1 expression in HepG2 (A), MCF7 (B), mouse brain (C), mouse lung (D) whole cell lysates.