

Datasheet for ABIN7308382

anti-STIP1 antibody

3 Images

[Go to Product page](#)

Overview

Quantity:	100 µL
Target:	STIP1
Reactivity:	Human, Mouse, Rat
Host:	Rabbit
Clonality:	Polyclonal
Conjugate:	This STIP1 antibody is un-conjugated
Application:	Western Blotting (WB), Immunohistochemistry (IHC), Immunofluorescence (IF), Immunoprecipitation (IP), Immunochromatography (IC)

Product Details

Purpose:	Rabbit polyclonal antibody to STIP1
Immunogen:	Recombinant full length protein of human STIP1
Specificity:	Recognizes endogenous levels of STIP1 protein.
Characteristics:	Rabbit polyclonal antibody to STIP1
Purification:	The antibody was purified by immunogen affinity chromatography.

Target Details

Target:	STIP1
Alternative Name:	STIP1 (STIP1 Products)
Background:	Stress-induced-phosphoprotein 1, STI1, Hsc70/Hsp90-organizing protein, Hop, Renal

Target Details

	carcinoma antigen NY-REN-11, Transformation-sensitive protein IEF SSP 3521
Gene ID:	10963, 20867, 192277
UniProt:	P31948 , Q60864 , O35814

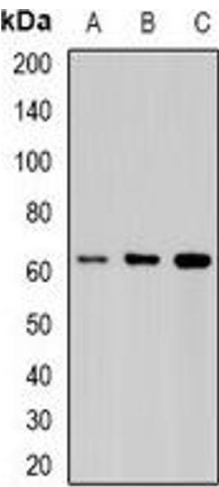
Application Details

Application Notes:	WB (1:500 - 1:2000), IH (1:50 - 1:200), IF/IC (1:50 - 1:200), IP (1:20 - 1:50)
Restrictions:	For Research Use only

Handling

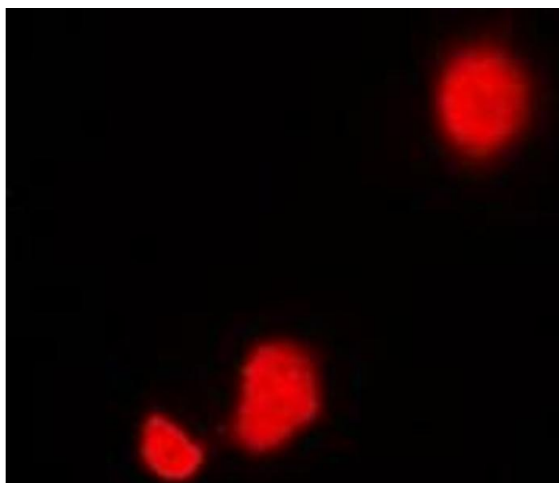
Format:	Liquid
Buffer:	Liquid in 0.42 % Potassium phosphate, 0.87 % Sodium chloride, pH 7.3, 30 % glycerol, and 0.01 % sodium azide.
Preservative:	Sodium azide
Precaution of Use:	This product contains Sodium azide: a POISONOUS AND HAZARDOUS SUBSTANCE which should be handled by trained staff only.
Storage:	-20 °C
Storage Comment:	Shipped at 4°C. Upon delivery aliquot and store at -20°C for one year. Avoid freeze/thaw cycles.
Expiry Date:	12 months

Images



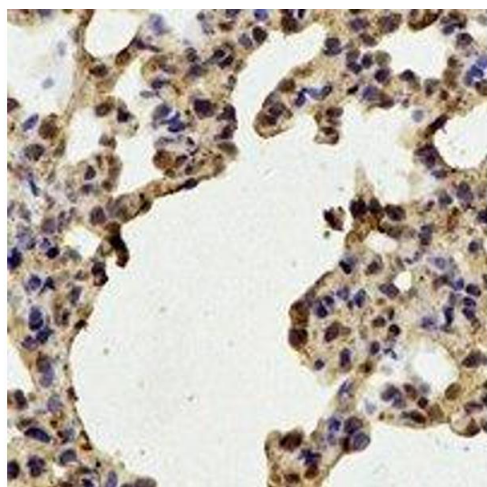
Western Blotting

Image 1. Western blot analysis of STIP1 expression in HeLa (A), COS7 (B), mouse brain (C) whole cell lysates.



Immunofluorescence

Image 2. Immunofluorescent analysis of STIP1 staining in HeLa cells. Formalin-fixed cells were permeabilized with 0.1% Triton X-100 in TBS for 5-10 minutes and blocked with 3% BSA-PBS for 30 minutes at room temperature. Cells were probed with the primary antibody



Immunohistochemistry

Image 3.