



Datasheet for ABIN7308398  
**anti-TAPBP antibody**



[Go to Product page](#)

3 Images

Overview

Quantity:	100 µL
Target:	TAPBP
Reactivity:	Human, Mouse
Host:	Rabbit
Clonality:	Polyclonal
Conjugate:	This TAPBP antibody is un-conjugated
Application:	Western Blotting (WB), Immunohistochemistry (IHC), Immunofluorescence (IF), Immunochromatography (IC)

Product Details

Purpose:	Rabbit polyclonal antibody to Tapasin
Immunogen:	Recombinant full length protein of human Tapasin
Specificity:	Recognizes endogenous levels of Tapasin protein.
Characteristics:	Rabbit polyclonal antibody to Tapasin
Purification:	The antibody was purified by immunogen affinity chromatography.

Target Details

Target:	TAPBP
Alternative Name:	Tapasin ( <a href="#">TAPBP Products</a> )
Background:	NGS17, TAPA, Tapasin, TPN, TPSN, NGS-17, TAP-associated protein, TAP-binding protein

## Target Details

Gene ID: 6892, 21356

UniProt: [O15533](#), [Q9R233](#)

## Application Details

Application Notes: WB (1:500 - 1:2000), IH (1:50 - 1:200), IF/IC (1:10 - 1:100)

Restrictions: For Research Use only

## Handling

Format: Liquid

Buffer: Liquid in 0.42 % Potassium phosphate, 0.87 % Sodium chloride, pH 7.3, 30 % glycerol, and 0.01 % sodium azide.

Preservative: Sodium azide

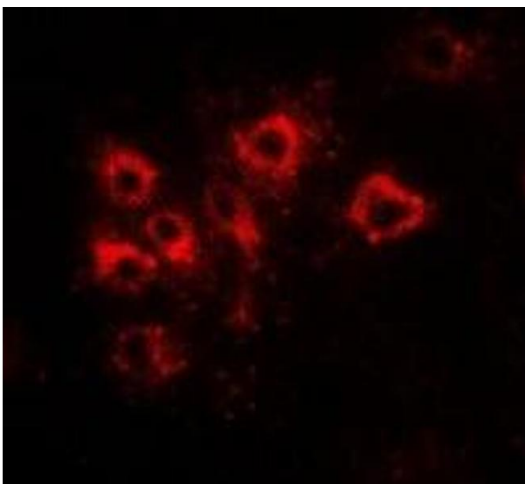
Precaution of Use: This product contains Sodium azide: a POISONOUS AND HAZARDOUS SUBSTANCE which should be handled by trained staff only.

Storage: -20 °C

Storage Comment: Shipped at 4°C. Upon delivery aliquot and store at -20°C for one year. Avoid freeze/thaw cycles.

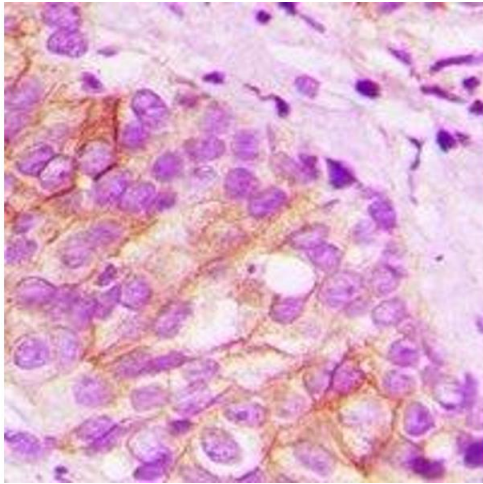
Expiry Date: 12 months

## Images



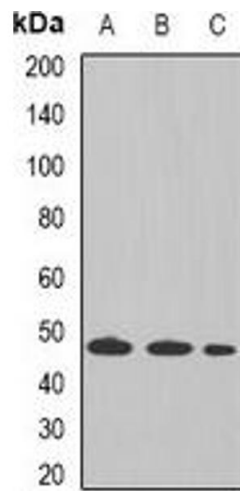
### Immunofluorescence

**Image 1.** Immunofluorescent analysis of Tapasin staining in HeLa cells. Formalin-fixed cells were permeabilized with 0.1% Triton X-100 in TBS for 5-10 minutes and blocked with 3% BSA-PBS for 30 minutes at room temperature. Cells were probed with the primary antibody



### Immunohistochemistry

**Image 2.**



### Western Blotting

**Image 3.** Western blot analysis of Tapasin expression in THP1 (A), Raji (B), mouse liver (C) whole cell lysates.