

Datasheet for ABIN7308456

**anti-TXNDC5 antibody****2** Images[Go to Product page](#)

## Overview

Quantity:	100 µL
Target:	TXNDC5
Reactivity:	Human
Host:	Rabbit
Clonality:	Polyclonal
Conjugate:	This TXNDC5 antibody is un-conjugated
Application:	Western Blotting (WB), Immunofluorescence (IF), Immunochromatography (IC)

## Product Details

Purpose:	Rabbit polyclonal antibody to ERp46
Immunogen:	Recombinant full length protein of human ERp46
Specificity:	Recognizes endogenous levels of ERp46 protein.
Characteristics:	Rabbit polyclonal antibody to ERp46
Purification:	The antibody was purified by immunogen affinity chromatography.

## Target Details

Target:	TXNDC5
Alternative Name:	ERp46 ( <a href="#">TXNDC5 Products</a> )
Background:	TLP46, Thioredoxin domain-containing protein 5, Endoplasmic reticulum resident protein 46, ER protein 46, ERp46, Thioredoxin-like protein p46

## Target Details

Gene ID:	81567
UniProt:	<a href="#">Q8NBS9</a>
Pathways:	<a href="#">Cell RedoxHomeostasis</a>

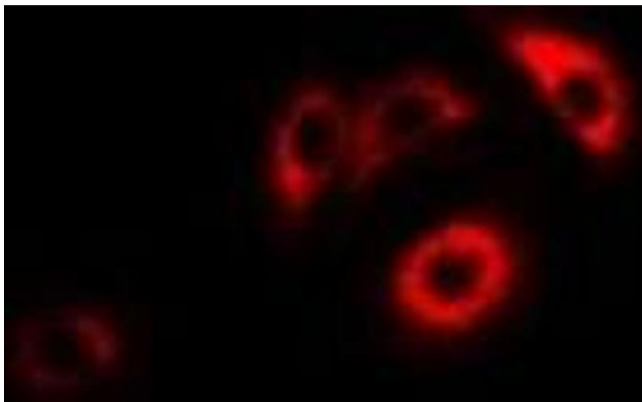
## Application Details

Application Notes:	WB (1:500 - 1:2000), IF/IC (1:50 - 1:100)
Restrictions:	For Research Use only

## Handling

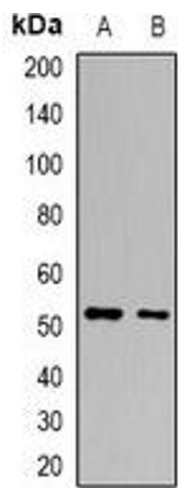
Format:	Liquid
Buffer:	Liquid in 0.42 % Potassium phosphate, 0.87 % Sodium chloride, pH 7.3, 30 % glycerol, and 0.01 % sodium azide.
Preservative:	Sodium azide
Precaution of Use:	This product contains Sodium azide: a POISONOUS AND HAZARDOUS SUBSTANCE which should be handled by trained staff only.
Storage:	-20 °C
Storage Comment:	Shipped at 4°C. Upon delivery aliquot and store at -20°C for one year. Avoid freeze/thaw cycles.
Expiry Date:	12 months

## Images



### Immunofluorescence

**Image 1.** Immunofluorescent analysis of ERp46 staining in HepG2 cells. Formalin-fixed cells were permeabilized with 0.1% Triton X-100 in TBS for 5-10 minutes and blocked with 3% BSA-PBS for 30 minutes at room temperature. Cells were probed with the primary antibody



Western Blotting

**Image 2.** Western blot analysis of ERp46 expression in HepG2 (A), H460 (B) whole cell lysates.