

Datasheet for ABIN7308498

anti-WIF1 antibody**2** Images[Go to Product page](#)

Overview

Quantity:	100 µL
Target:	WIF1
Reactivity:	Human, Rat, Mouse
Host:	Rabbit
Clonality:	Polyclonal
Conjugate:	This WIF1 antibody is un-conjugated
Application:	Western Blotting (WB), Immunofluorescence (IF), Immunochromatography (IC)

Product Details

Purpose:	Rabbit polyclonal antibody to WIF-1
Immunogen:	Recombinant full length protein of human WIF-1
Specificity:	Recognizes endogenous levels of WIF-1 protein.
Characteristics:	Rabbit polyclonal antibody to WIF-1
Purification:	The antibody was purified by immunogen affinity chromatography.

Target Details

Target:	WIF1
Alternative Name:	WIF-1 (WIF1 Products)
Background:	Wnt inhibitory factor 1, WIF-1
Gene ID:	11197, 24117, 114557

Target Details

UniProt:	Q9Y5W5, Q9WUA1, Q6IN38
Pathways:	WNT Signaling, Positive Regulation of fat Cell Differentiation

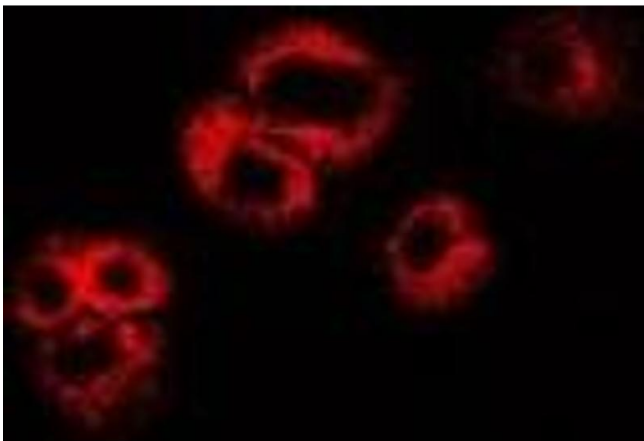
Application Details

Application Notes:	WB (1:500 - 1:2000), IF/IC (1:50 - 1:200)
Restrictions:	For Research Use only

Handling

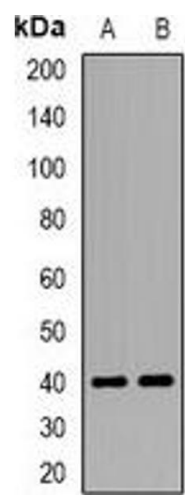
Format:	Liquid
Buffer:	Liquid in 0.42 % Potassium phosphate, 0.87 % Sodium chloride, pH 7.3, 30 % glycerol, and 0.01 % sodium azide.
Preservative:	Sodium azide
Precaution of Use:	This product contains Sodium azide: a POISONOUS AND HAZARDOUS SUBSTANCE which should be handled by trained staff only.
Storage:	-20 °C
Storage Comment:	Shipped at 4°C. Upon delivery aliquot and store at -20°C for one year. Avoid freeze/thaw cycles.
Expiry Date:	12 months

Images



Immunofluorescence

Image 1. Immunofluorescent analysis of WIF-1 staining in U2OS cells. Formalin-fixed cells were permeabilized with 0.1% Triton X-100 in TBS for 5-10 minutes and blocked with 3% BSA-PBS for 30 minutes at room temperature. Cells were probed with the primary antibody



Western Blotting

Image 2. Western blot analysis of WIF-1 expression in mouse heart (A), mouse skeletal muscle (B) whole cell lysates.