

Datasheet for ABIN7308516

anti-YWHAB antibody**3** Images[Go to Product page](#)

Overview

Quantity:	100 µL
Target:	YWHAB
Reactivity:	Human, Mouse, Rat
Host:	Rabbit
Clonality:	Polyclonal
Conjugate:	This YWHAB antibody is un-conjugated
Application:	Western Blotting (WB), Immunohistochemistry (IHC), Immunofluorescence (IF), Immunochromatography (IC)

Product Details

Purpose:	Rabbit polyclonal antibody to 14-3-3 beta
Immunogen:	Recombinant full length protein of human 14-3-3 beta
Specificity:	Recognizes endogenous levels of 14-3-3 beta protein.
Characteristics:	Rabbit polyclonal antibody to 14-3-3 beta
Purification:	The antibody was purified by immunogen affinity chromatography.

Target Details

Target:	YWHAB
Alternative Name:	14-3-3 beta (YWHAB Products)
Background:	14-3-3 protein beta/alpha, Protein 1054, Protein kinase C inhibitor protein 1, KCIP-1

Target Details

Gene ID:	7529, 54401, 56011
UniProt:	P31946 , Q9CQV8 , P35213
Pathways:	Fc-epsilon Receptor Signaling Pathway , EGFR Signaling Pathway , Neurotrophin Signaling Pathway , Myometrial Relaxation and Contraction , Maintenance of Protein Location

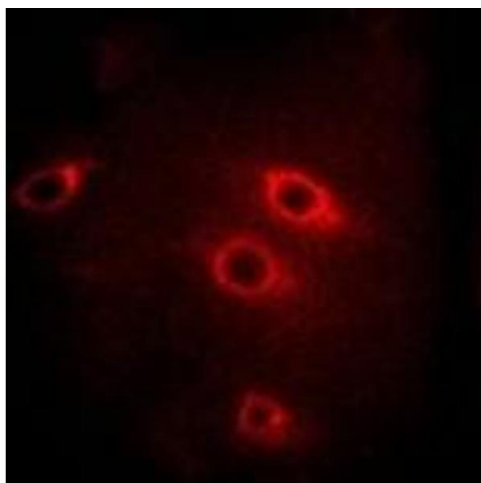
Application Details

Application Notes:	WB (1:500 - 1:2000), IH (1:50 - 1:200), IF/IC (1:50 - 1:200)
Restrictions:	For Research Use only

Handling

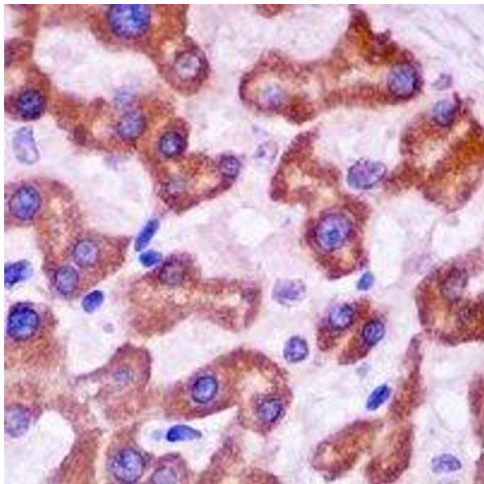
Format:	Liquid
Buffer:	Liquid in 0.42 % Potassium phosphate, 0.87 % Sodium chloride, pH 7.3, 30 % glycerol, and 0.01 % sodium azide.
Preservative:	Sodium azide
Precaution of Use:	This product contains Sodium azide: a POISONOUS AND HAZARDOUS SUBSTANCE which should be handled by trained staff only.
Storage:	-20 °C
Storage Comment:	Shipped at 4°C. Upon delivery aliquot and store at -20°C for one year. Avoid freeze/thaw cycles.
Expiry Date:	12 months

Images



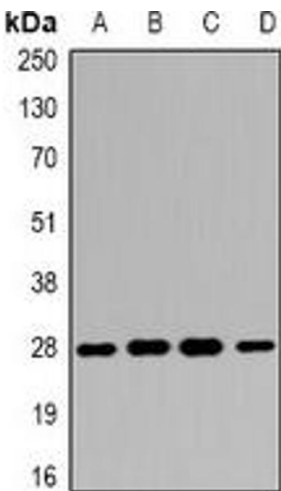
Immunofluorescence

Image 1. Immunofluorescent analysis of 14-3-3 beta staining in Hela cells. Formalin-fixed cells were permeabilized with 0.1% Triton X-100 in TBS for 5-10 minutes and blocked with 3% BSA-PBS for 30 minutes at room temperature. Cells were probed with the primary ant



Immunohistochemistry

Image 2.



Western Blotting

Image 3. Western blot analysis of 14-3-3 beta expression in SW480 (A), HepG2 (B), mouse liver (C), mouse kidney (D) whole cell lysates.