

Datasheet for ABIN730933
anti-BRMS1L antibody (AA 151-246)

6 Images

[Go to Product page](#)

Overview

Quantity:	100 µL
Target:	BRMS1L
Binding Specificity:	AA 151-246
Reactivity:	Human
Host:	Rabbit
Clonality:	Polyclonal
Conjugate:	This BRMS1L antibody is un-conjugated
Application:	Western Blotting (WB), ELISA, Immunofluorescence (Cultured Cells) (IF (cc)), Immunofluorescence (Paraffin-embedded Sections) (IF (p)), Immunohistochemistry (Paraffin- embedded Sections) (IHC (p)), Immunohistochemistry (Frozen Sections) (IHC (fro))

Product Details

Immunogen:	KLH conjugated synthetic peptide derived from human BRMS-1
Isotype:	IgG
Cross-Reactivity:	Human
Predicted Reactivity:	Mouse,Rat
Purification:	Purified by Protein A.

Target Details

Target:	BRMS1L
---------	--------

Target Details

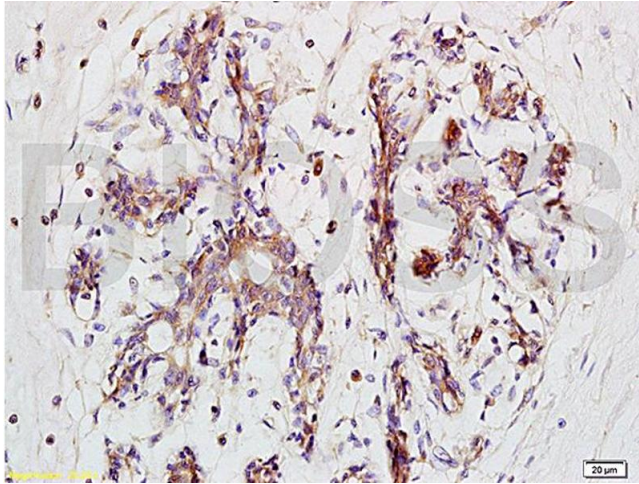
Alternative Name:	BRMS-1 (BRMS1L Products)
Background:	<p>Synonyms: Breast cancer metastasis-suppressor 1, BRMS1</p> <p>Background: Transcriptional repressor. Down-regulates transcription activation by NF-kappa-B by promoting the deacetylation of RELA at 'Lys-310'. Promotes HDAC1 binding to promoter regions. Down-regulates expression of anti-apoptotic genes that are controlled by NF-kappa-B. Promotes apoptosis in cells that have inadequate adherence to a substrate, a process called anoikis, and may thereby inhibit metastasis. May be a mediator of metastasis suppression in breast carcinoma.</p>
Gene ID:	25855
UniProt:	Q9HCU9

Application Details

Application Notes:	WB 1:300-5000 ELISA 1:500-1000 IHC-P 1:200-400 IHC-F 1:100-500 IF(IHC-P) 1:50-200 IF(IHC-F) 1:50-200 IF(ICC) 1:50-200
Restrictions:	For Research Use only

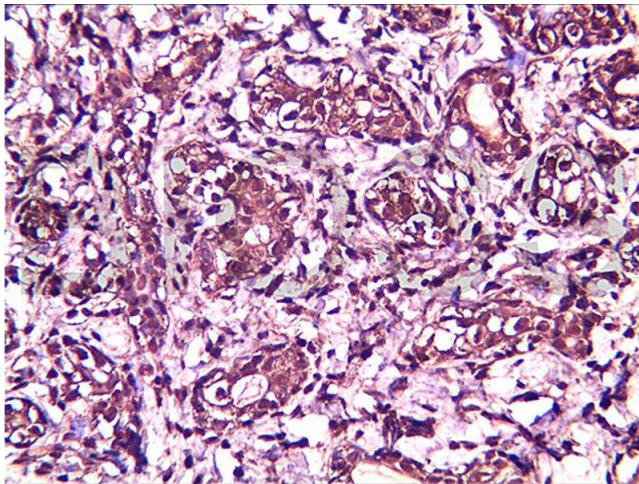
Handling

Format:	Liquid
Concentration:	1 µg/µL
Buffer:	0.01M TBS(pH 7.4) with 1 % BSA, 0.02 % Proclin300 and 50 % Glycerol.
Preservative:	ProClin
Precaution of Use:	This product contains ProClin: a POISONOUS AND HAZARDOUS SUBSTANCE, which should be handled by trained staff only.
Storage:	4 °C,-20 °C
Storage Comment:	Shipped at 4°C. Store at -20°C for one year. Avoid repeated freeze/thaw cycles.
Expiry Date:	12 months



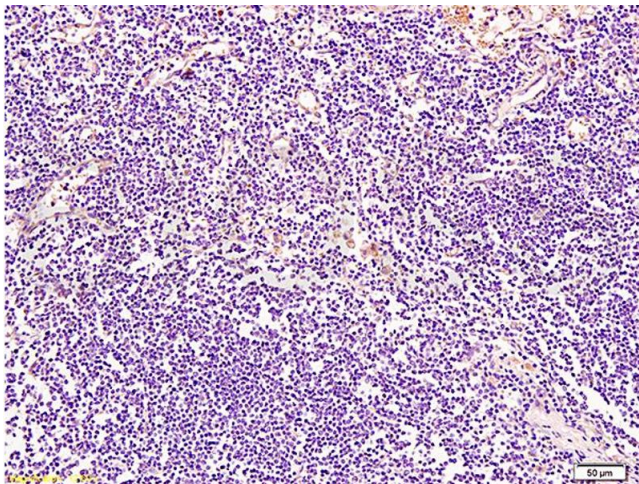
Immunohistochemistry

Image 1. Formalin-fixed and paraffin embedded human breast carcinoma tissue labeled with Anti-BRMS-1 Polyclonal Antibody, Unconjugated (ABIN730933) at 1:200 followed by conjugation to the secondary antibody and DAB staining



Immunohistochemistry

Image 2. Formalin-fixed and paraffin embedded human breast carcinoma labeled with Anti-BRMS-1 Polyclonal Antibody, Unconjugated (ABIN730933) at 1:200, followed by conjugation to the secondary antibody and DAB staining



Immunohistochemistry

Image 3. Formalin-fixed and paraffin embedded human lymph node tissue labeled with Anti-BRMS-1 Polyclonal Antibody, Unconjugated (ABIN730933) at 1:200 followed by conjugation to the secondary antibody and DAB staining

Please check the [product details page](#) for more images. Overall 6 images are available for ABIN730933.