

Datasheet for ABIN731093
anti-CCR6 antibody (AA 201-300)

3 Images

1 Publication

[Go to Product page](#)

Overview

Quantity:	100 µL
Target:	CCR6
Binding Specificity:	AA 201-300
Reactivity:	Human, Mouse
Host:	Rabbit
Clonality:	Polyclonal
Conjugate:	This CCR6 antibody is un-conjugated
Application:	ELISA, Western Blotting (WB)

Product Details

Immunogen:	KLH conjugated synthetic peptide derived from human CCR6
Isotype:	IgG
Cross-Reactivity:	Human, Mouse
Predicted Reactivity:	Rat
Purification:	Purified by Protein A.

Target Details

Target:	CCR6
Alternative Name:	CCR6/CD196 (CCR6 Products)
Background:	Synonyms: BN-1, DCR2, DRY6, CCR-6, CD196, CKRL3, GPR29, CKR-L3, CMKBR6, GPRCY4,

Target Details

STRL22, CC-CKR-6, C-C CKR-6, C-C chemokine receptor type 6, Chemokine receptor-like 3, G-protein coupled receptor 29, GPR-CY4, LARC receptor, CCR6

Background: Receptor for a C-C type chemokine. Binds to MIP-3-alpha/LARC and subsequently transduces a signal by increasing the intracellular calcium ions level.

Gene ID: 1235

UniProt: [P51684](#)

Pathways: [cAMP Metabolic Process](#)

Application Details

Application Notes: WB 1:300-5000
ELISA 1:500-1000
FCM 1:20-100
IHC-P 1:200-400

Restrictions: For Research Use only

Handling

Format: Liquid

Concentration: 1 µg/µL

Buffer: 0.01M TBS(pH 7.4) with 1 % BSA, 0.02 % Proclin300 and 50 % Glycerol.

Preservative: ProClin

Precaution of Use: This product contains ProClin: a POISONOUS AND HAZARDOUS SUBSTANCE, which should be handled by trained staff only.

Storage: 4 °C,-20 °C

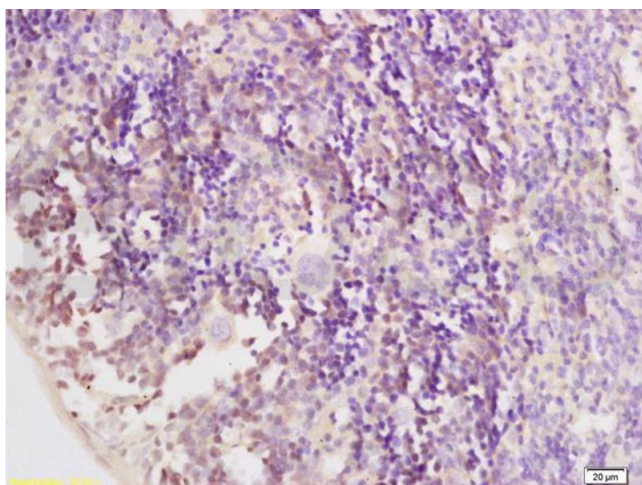
Storage Comment: Shipped at 4°C. Store at -20°C for one year. Avoid repeated freeze/thaw cycles.

Expiry Date: 12 months

Publications

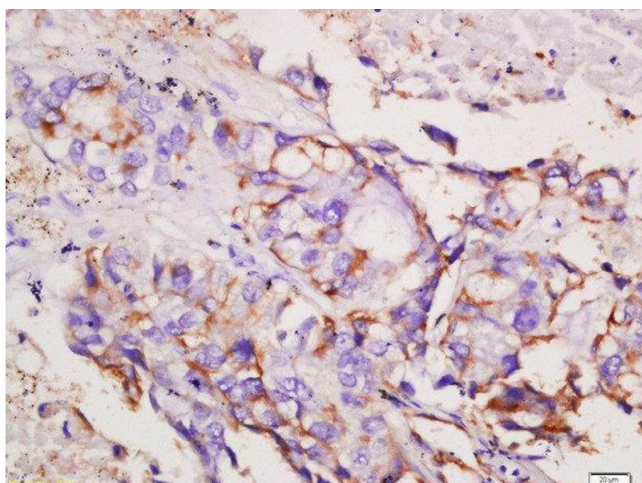
Product cited in: Kalyanasundaram Bhanumathy, Zhang, Xie, Xu, Tan, Xiang: "Potent immunotherapy against well-established thymoma using adoptively transferred transgene IL-6-engineered dendritic cell-stimulated CD8(+) T-cells with prolonged survival and enhanced cytotoxicity." in: **The journal of gene medicine**, (2015) ([PubMed](#)).

Images



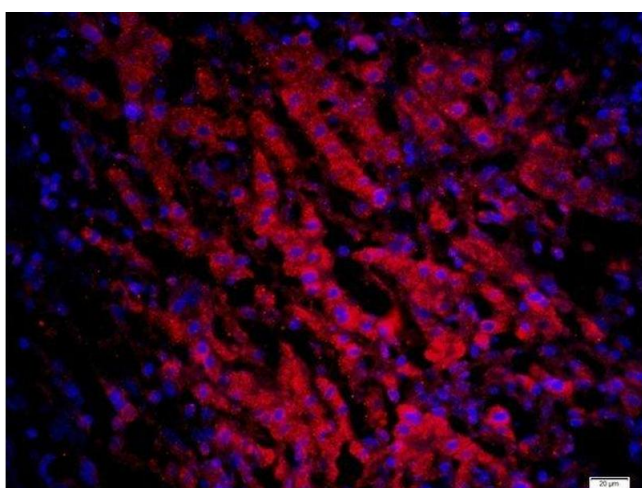
Immunohistochemistry

Image 1. Formalin-fixed and paraffin embedded mouse spleen tissue labeled with Anti CCR6/CD196 Polyclonal Antibody, Unconjugated (ABIN731093) at 1:200 followed by conjugation to the secondary antibody and DAB staining



Immunohistochemistry (Paraffin-embedded Sections)

Image 2. Formalin-fixed and paraffin embedded human lung carcinoma labeled with Rabbit Anti-CCR6/CD196 Polyclonal Antibody, Unconjugated at 1:200 followed by conjugation to the secondary antibody and DAB staining



Immunofluorescence (Paraffin-embedded Sections)

Image 3. Paraformaldehyde-fixed, paraffin embedded human liver cancer, Antigen retrieval by boiling in sodium citrate buffer (pH6) for 15min, Block endogenous peroxidase by 3% hydrogen peroxide for 20 minutes, Blocking buffer (normal goat serum) at 37°C for 30min, Antibody incubation with CCR6 Polyclonal Antibody, Unconjugated at 1:200 overnight at 4°C, followed by a conjugated secondary -AF594) at [1:500] for 90 minutes and DAPI staining of the nuclei.