

Datasheet for ABIN731183

anti-Ubiquitin antibody (AA 1-76)

3 Images

1 Publication



[Go to Product page](#)

Overview

Quantity:	100 µL
Target:	Ubiquitin (Ub)
Binding Specificity:	AA 1-76
Reactivity:	Human, Mouse, Rat
Host:	Rabbit
Clonality:	Polyclonal
Conjugate:	This Ubiquitin antibody is un-conjugated
Application:	Western Blotting (WB), ELISA, Immunohistochemistry (Paraffin-embedded Sections) (IHC (p)), Flow Cytometry (FACS), Immunohistochemistry (Frozen Sections) (IHC (fro)), Immunofluorescence (Cultured Cells) (IF (cc)), Immunofluorescence (Paraffin-embedded Sections) (IF (p))

Product Details

Immunogen:	KLH conjugated synthetic peptide derived from human Ubiquitin
Isotype:	IgG
Cross-Reactivity:	Human, Mouse, Rat
Predicted Reactivity:	Pig
Purification:	Purified by Protein A.

Target Details

Target:	Ubiquitin (Ub)
---------	----------------

Target Details

Alternative Name: Ubiquitin ([Ub Products](#))

Background: Synonyms: HMG2, Polyubiquitin-C, UBC

Background: Ubiquitin: Exists either covalently attached to another protein, or free (unanchored). When covalently bound, it is conjugated to target proteins via an isopeptide bond either as a monomer (monoubiquitin), a polymer linked via different Lys residues of the ubiquitin (polyubiquitin chains) or a linear polymer linked via the initiator Met of the ubiquitin (linear polyubiquitin chains). Polyubiquitin chains, when attached to a target protein, have different functions depending on the Lys residue of the ubiquitin that is linked: Lys-6-linked may be involved in DNA repair, Lys-11-linked is involved in ERAD (endoplasmic reticulum-associated degradation) and in cell-cycle regulation, Lys-29-linked is involved in lysosomal degradation, Lys-33-linked is involved in kinase modification, Lys-48-linked is involved in protein degradation via the proteasome, Lys-63-linked is involved in endocytosis, DNA-damage responses as well as in signaling processes leading to activation of the transcription factor NF-kappa-B. Linear polymer chains formed via attachment by the initiator Met lead to cell signaling. Ubiquitin is usually conjugated to Lys residues of target proteins, however, in rare cases, conjugation to Cys or Ser residues has been observed. When polyubiquitin is free (unanchored-polyubiquitin), it also has distinct roles, such as in activation of protein kinases, and in signaling.

Gene ID: 7316

UniProt: [P0CG48](#)

Pathways: [Mitotic G1-G1/S Phases](#), [Ubiquitin Proteasome Pathway](#)

Application Details

Application Notes: WB 1:300-5000
ELISA 1:500-1000
FCM 1:20-100
IHC-P 1:200-400
IHC-F 1:100-500
IF(IHC-P) 1:50-200
IF(IHC-F) 1:50-200
IF(ICC) 1:50-200

Restrictions: For Research Use only

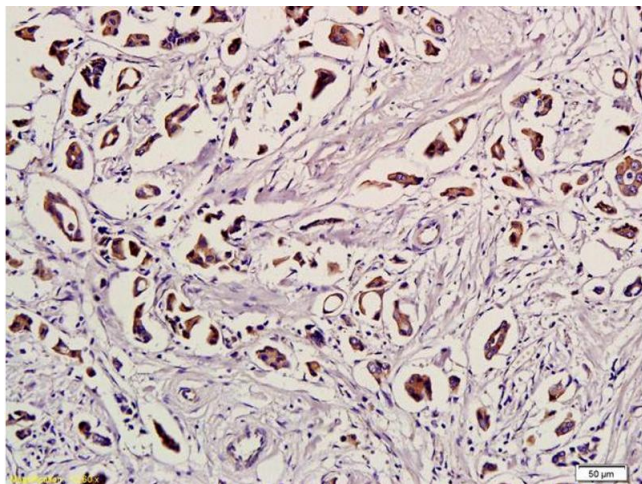
Handling

Format:	Liquid
Concentration:	1 µg/µL
Buffer:	0.01M TBS(pH 7.4) with 1 % BSA, 0.02 % Proclin300 and 50 % Glycerol.
Preservative:	ProClin
Precaution of Use:	This product contains ProClin: a POISONOUS AND HAZARDOUS SUBSTANCE, which should be handled by trained staff only.
Storage:	4 °C,-20 °C
Storage Comment:	Shipped at 4°C. Store at -20°C for one year. Avoid repeated freeze/thaw cycles.
Expiry Date:	12 months

Publications

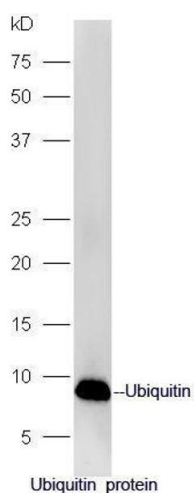
Product cited in:	Cheng, Yan, Gu, He: "The ubiquitin-proteasome system is required for the early stages of porcine circovirus type 2 replication." in: Virology , Vol. 456-457, pp. 198-204, (2014) (PubMed).
-------------------	--

Images



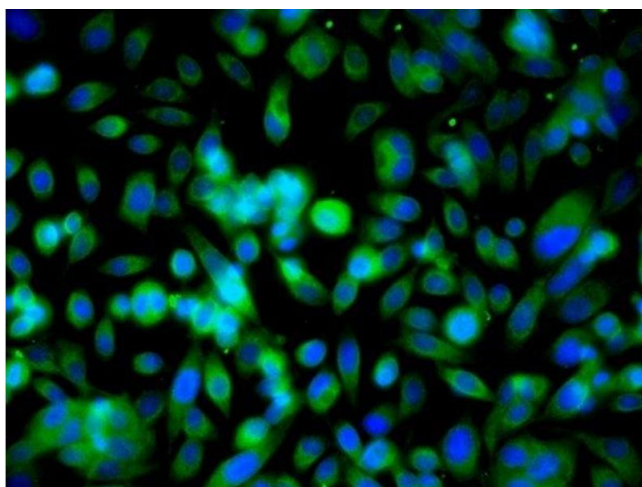
Immunohistochemistry

Image 1. Formalin-fixed and paraffin embedded human breast cancer labeled with Anti-Ubiquitin/UBC/UB Polyclonal Antibody, Unconjugated (ABIN731183) followed by conjugation to the secondary antibody and DAB staining



Western Blotting

Image 2. Ubiquitin protein probed with Rabbit Anti-Ubiquitin Polyclonal Antibody, Unconjugated at 1:5000 for 90 min at 37°C.



Immunofluorescence (Cultured Cells)

Image 3. Image provided by One World Lab validation program. PC3 cells probed with Ubiquitin Polyclonal Antibody at 1:50 for 60 minutes at room temperature followed by Goat Anti-Rabbit IgG (H+L) Alexa Fluor 488 Conjugated secondary antibody.