

Datasheet for ABIN731348
anti-Reelin antibody



[Go to Product page](#)

1 Image

Overview

Quantity:	100 µL
Target:	Reelin (RELN)
Reactivity:	Human, Rat, Mouse
Host:	Rabbit
Clonality:	Polyclonal
Conjugate:	This Reelin antibody is un-conjugated
Application:	Immunohistochemistry (Paraffin-embedded Sections) (IHC (p)), Immunofluorescence (Paraffin-embedded Sections) (IF (p))

Product Details

Immunogen:	KLH conjugated synthetic peptide derived from human RELN
Isotype:	IgG
Purification:	Purified by Protein A.

Target Details

Target:	Reelin (RELN)
Alternative Name:	Reln/Reelin
Background:	Extracellular matrix serine protease that plays a role in layering of neurons in the cerebral cortex and cerebellum. Regulates microtubule function in neurons and neuronal migration. Affects migration of sympathetic preganglionic neurons in the spinal cord, where it seems to act as a barrier to neuronal migration. Enzymatic activity is important for the modulation of cell

Target Details

adhesion. Binding to the extracellular domains of lipoprotein receptors VLDLR and LRP8/APOER2 induces tyrosine phosphorylation of DAB1 and modulation of TAU phosphorylation (By similarity).

Subcellular location: Extracellular, Secreted

Synonyms: RL, ETL7, LIS2, PRO1598, Reelin, RELN

Gene ID: 5649

UniProt: [P78509](#)

Pathways: [Synaptic Membrane](#)

Application Details

Application Notes: IHC-P 1:100-500
IF(IHC-P) 1:50-200

Restrictions: For Research Use only

Handling

Format: Liquid

Concentration: 1 µg/µL

Buffer: Aqueous buffered solution containing 1 % BSA, 50 % glycerol and 0.09 % sodium azide.

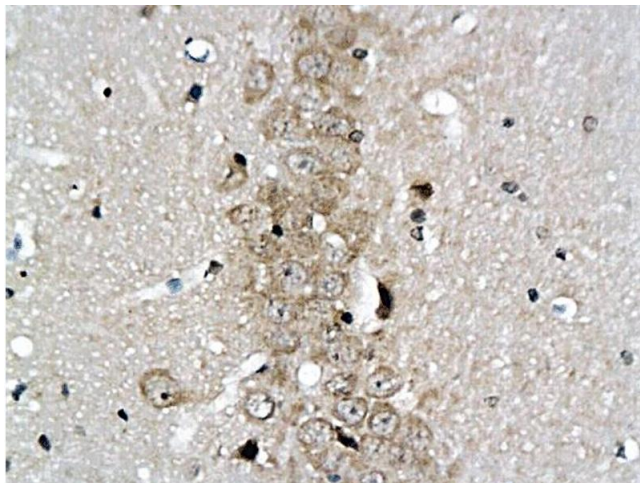
Preservative: Sodium azide

Precaution of Use: This product contains Sodium azide: a POISONOUS AND HAZARDOUS SUBSTANCE, which should be handled by trained staff only.

Storage: -20 °C

Storage Comment: Store at -20°C

Expiry Date: 12 months



Immunohistochemistry

Image 1. Formalin-fixed and paraffin embedded rat hippocampus labeled with Anti-RELN/REELIN Polyclonal Antibody, Unconjugated (ABIN731348) followed by conjugation to the secondary antibody and DAB staining