

Datasheet for ABIN731453  
**anti-ENPP3 antibody (AA 40-140)**

## 2 Images

[Go to Product page](#)

## Overview

Quantity:	100 µL
Target:	ENPP3
Binding Specificity:	AA 40-140
Reactivity:	Human, Rat
Host:	Rabbit
Clonality:	Polyclonal
Conjugate:	This ENPP3 antibody is un-conjugated
Application:	Flow Cytometry (FACS), ELISA, Immunohistochemistry (Paraffin-embedded Sections) (IHC (p)), Immunofluorescence (Cultured Cells) (IF (cc)), Immunofluorescence (Paraffin-embedded Sections) (IF (p)), Immunohistochemistry (Frozen Sections) (IHC (fro))

## Product Details

Immunogen:	KLH conjugated synthetic peptide derived from mouse ENPP3
Isotype:	IgG
Cross-Reactivity:	Human, Rat
Predicted Reactivity:	Mouse,Dog,Cow,Pig
Purification:	Purified by Protein A.

## Target Details

Target:	ENPP3
---------	-------

## Target Details

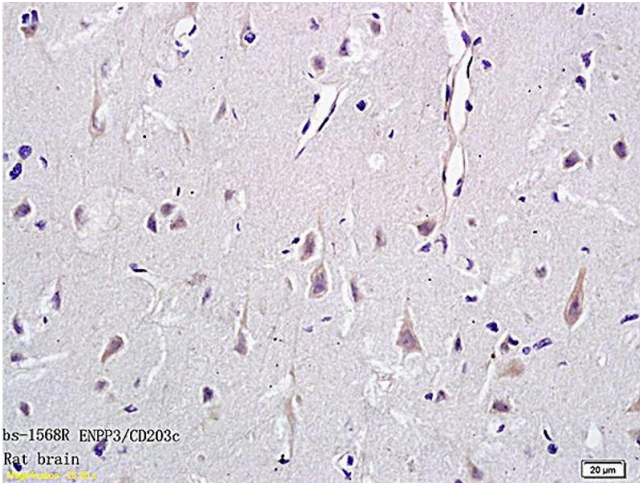
Alternative Name:	ENPP3/CD203c ( <a href="#">ENPP3 Products</a> )
Background:	<p>Synonyms: CD23c, AI876438, Ectonucleotide pyrophosphatase/phosphodiesterase family member 3, E-NPP 3, Phosphodiesterase I beta, PD-Ibeta, Phosphodiesterase I/nucleotide pyrophosphatase 3, Enpp3</p> <p>Background: Cleaves a variety of phosphodiester and phosphosulfate bonds including deoxynucleotides, nucleotide sugars, and NAD.</p>
Molecular Weight:	100 kDa
Gene ID:	209558
UniProt:	<a href="#">Q6DYE8</a>
Pathways:	<a href="#">Regulation of Muscle Cell Differentiation</a> , <a href="#">Negative Regulation of Transporter Activity</a>

## Application Details

Application Notes:	<p>ELISA 1:500-1000</p> <p>FCM 1:20-100</p> <p>IHC-P 1:200-400</p> <p>IHC-F 1:100-500</p> <p>IF(IHC-P) 1:50-200</p> <p>IF(IHC-F) 1:50-200</p> <p>IF(ICC) 1:50-200</p>
Restrictions:	For Research Use only

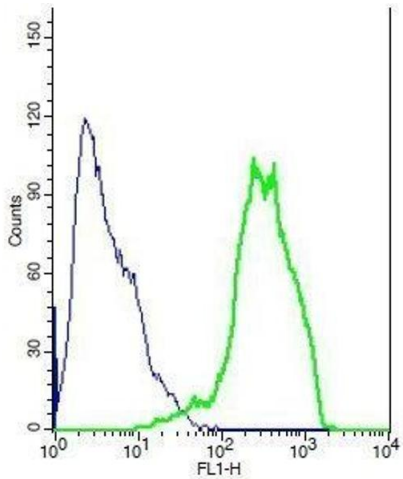
## Handling

Format:	Liquid
Concentration:	1 µg/µL
Buffer:	0.01M TBS( pH 7.4) with 1 % BSA, 0.02 % Proclin300 and 50 % Glycerol.
Preservative:	ProClin
Precaution of Use:	This product contains ProClin: a POISONOUS AND HAZARDOUS SUBSTANCE, which should be handled by trained staff only.
Storage:	4 °C,-20 °C
Storage Comment:	Shipped at 4°C. Store at -20°C for one year. Avoid repeated freeze/thaw cycles.



Immunohistochemistry

**Image 1.** Formalin-fixed and paraffin embedded rat brain tissue labeled with Anti-CD203c Polyclonal Antibody, Unconjugated (ABIN731453) followed by conjugation to the secondary antibody and DAB staining



Flow Cytometry

**Image 2.** Human HeLA cells probed with Rabbit Anti-ENPP3/CD203c Polyclonal Antibody, Unconjugated .