



[Go to Product page](#)

Datasheet for ABIN731543

## anti-RRM1 antibody (AA 733-778)

### 3 Images

#### Overview

Quantity:	100 µL
Target:	RRM1
Binding Specificity:	AA 733-778
Reactivity:	Human
Host:	Rabbit
Clonality:	Polyclonal
Conjugate:	This RRM1 antibody is un-conjugated
Application:	ELISA, Immunofluorescence (Cultured Cells) (IF (cc)), Immunofluorescence (Paraffin-embedded Sections) (IF (p)), Immunohistochemistry (Paraffin-embedded Sections) (IHC (p)), Immunohistochemistry (Frozen Sections) (IHC (fro))

#### Product Details

Immunogen:	KLH conjugated synthetic peptide derived from human RRM1
Isotype:	IgG
Predicted Reactivity:	Human,Mouse,Rat,Dog,Cow,Pig,Horse,Rabbit
Purification:	Purified by Protein A.

#### Target Details

Target:	RRM1
Alternative Name:	RRM1 ( <a href="#">RRM1 Products</a> )

## Target Details

---

Background: Synonyms: R1, RR1, RIR1, Ribonucleoside-diphosphate reductase large subunit, Ribonucleoside-diphosphate reductase subunit M1, Ribonucleotide reductase large subunit, RRM1  
Background: Provides the precursors necessary for DNA synthesis. Catalyzes the biosynthesis of deoxyribonucleotides from the corresponding ribonucleotides.

Gene ID: 6240

UniProt: [P23921](#)

Pathways: [Positive Regulation of Endopeptidase Activity](#)

## Application Details

---

Application Notes: ELISA 1:500-1000  
IHC-P 1:200-400  
IHC-F 1:100-500  
IF(IHC-P) 1:50-200  
IF(IHC-F) 1:50-200  
IF(ICC) 1:50-200

Restrictions: For Research Use only

## Handling

---

Format: Liquid

Concentration: 1 µg/µL

Buffer: 0.01M TBS( pH 7.4) with 1 % BSA, 0.02 % Proclin300 and 50 % Glycerol.

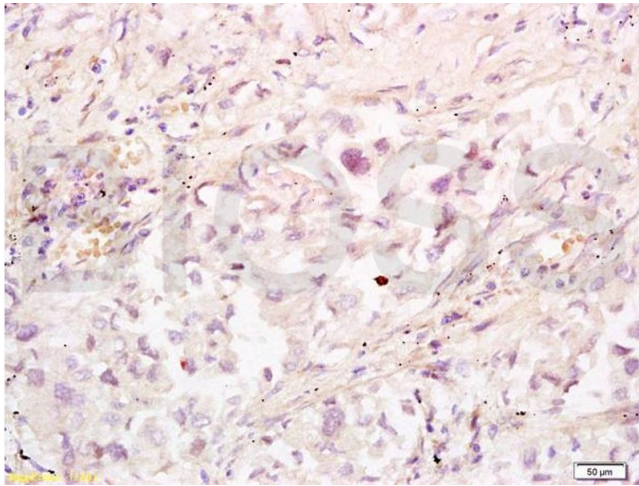
Preservative: ProClin

Precaution of Use: This product contains ProClin: a POISONOUS AND HAZARDOUS SUBSTANCE, which should be handled by trained staff only.

Storage: 4 °C,-20 °C

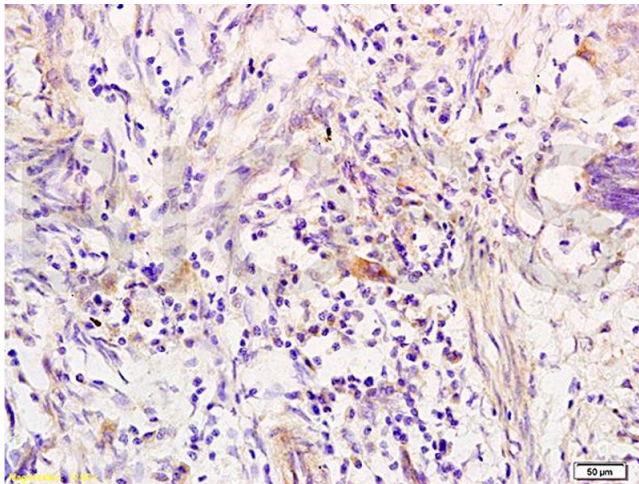
Storage Comment: Shipped at 4°C. Store at -20°C for one year. Avoid repeated freeze/thaw cycles.

Expiry Date: 12 months



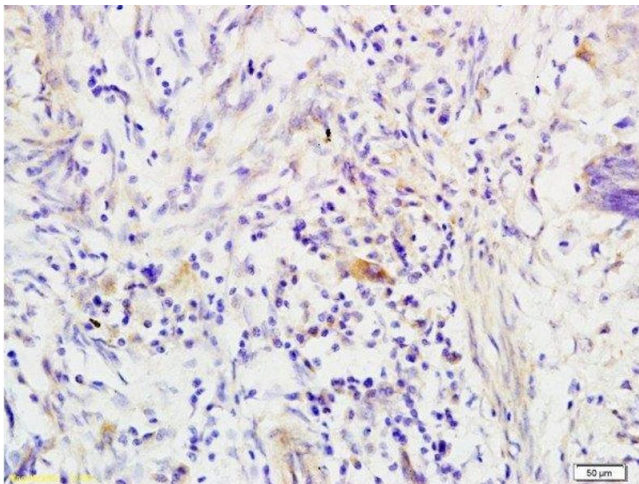
#### Immunohistochemistry

**Image 1.** Formalin-fixed and paraffin embedded human lung carcinoma tissue labeled with Anti-RRM1 Polyclonal Antibody, Unconjugated (ABIN731543) at 1:200 followed by conjugation to the secondary antibody, (SP-0023), and DAB staining



#### Immunohistochemistry

**Image 2.** Formalin-fixed and paraffin embedded human colon carcinoma tissue labeled with Anti-RRM1 Polyclonal Antibody, Unconjugated (ABIN731543) at 1:200 followed by conjugation to the secondary antibody, (SP-0023), and DAB staining



#### Immunohistochemistry (Paraffin-embedded Sections)

**Image 3.** Formalin-fixed and paraffin embedded human colon carcinoma tissue labeled with Anti-RRM1 Polyclonal Antibody, Unconjugated at 1:200 followed by conjugation to the secondary antibody, (SP-0023), and DAB staining