

Datasheet for ABIN731663
anti-MBP/MBL antibody (AA 31-130)[Go to Product page](#)

3 Images

Overview

Quantity:	100 µL
Target:	MBP/MBL
Binding Specificity:	AA 31-130
Reactivity:	Human, Rat
Host:	Rabbit
Clonality:	Polyclonal
Conjugate:	This MBP/MBL antibody is un-conjugated
Application:	Immunohistochemistry (Frozen Sections) (IHC (fro)), ELISA, Immunofluorescence (IF), Immunocytochemistry (ICC), Immunohistochemistry (Paraffin-embedded Sections) (IHC (p))

Product Details

Immunogen:	KLH conjugated synthetic peptide derived from human Mannose-binding protein C
Isotype:	IgG
Cross-Reactivity:	Human, Rat
Predicted Reactivity:	Mouse,Rabbit
Purification:	Purified by Protein A.

Target Details

Target:	MBP/MBL
Alternative Name:	Mannan Binding Lectin (MBP/MBL Products)

Target Details

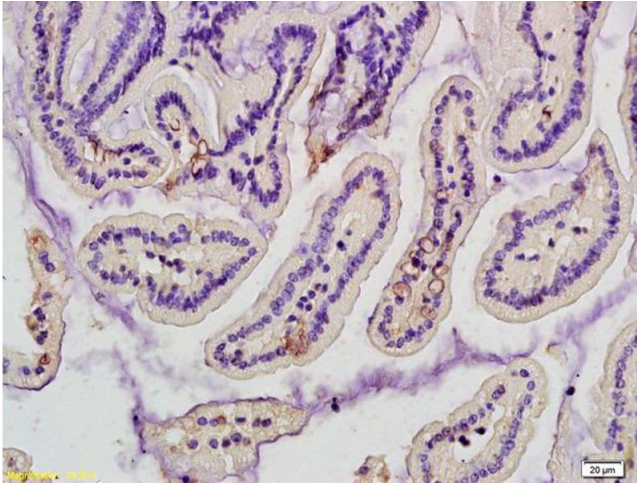
Background:	<p>Synonyms: MBL, MBP, MBP1, MBPD, MBL2D, MBP-C, COLEC1, HSMBPC, Mannose-binding protein C, Collectin-1, Mannan-binding protein, Mannose-binding lectin, MBL2</p> <p>Background: Calcium-dependent lectin involved in innate immune defense. Binds mannose, fucose and N-acetylglucosamine on different microorganisms and activates the lectin complement pathway. Binds to late apoptotic cells, as well as to apoptotic blebs and to necrotic cells, but not to early apoptotic cells, facilitating their uptake by macrophages. May bind DNA.</p>
Gene ID:	4153
UniProt:	P11226

Application Details

Application Notes:	<p>ELISA 1:500-1000</p> <p>IHC-P 1:200-400</p> <p>IHC-F 1:100-500</p> <p>IF()</p> <p>ICC 1:100-500</p>
Restrictions:	For Research Use only

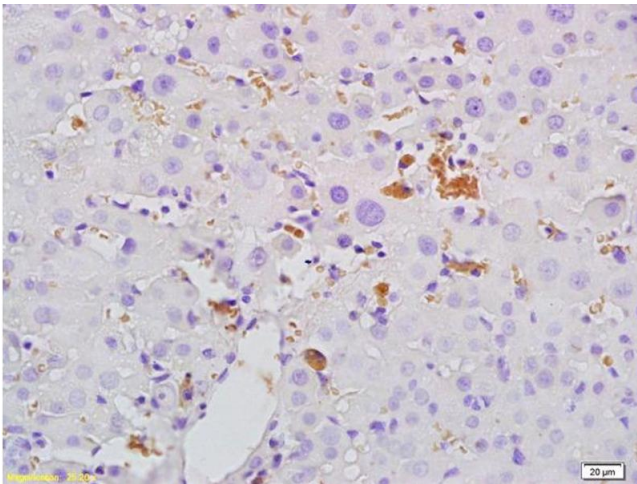
Handling

Format:	Liquid
Concentration:	1 µg/µL
Buffer:	0.01M TBS(pH 7.4) with 1 % BSA, 0.02 % Proclin300 and 50 % Glycerol.
Preservative:	ProClin
Precaution of Use:	This product contains ProClin: a POISONOUS AND HAZARDOUS SUBSTANCE, which should be handled by trained staff only.
Storage:	4 °C,-20 °C
Storage Comment:	Shipped at 4°C. Store at -20°C for one year. Avoid repeated freeze/thaw cycles.
Expiry Date:	12 months



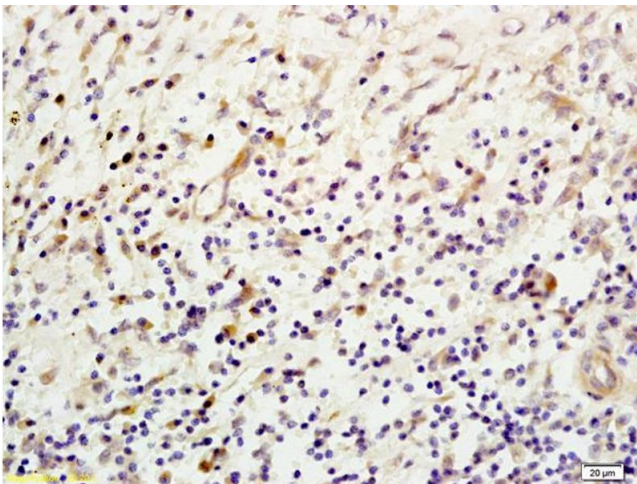
Immunohistochemistry

Image 1. Formalin-fixed and paraffin embedded rat intestine tissue labeled with Anti- Mannan Binding Lectin Polyclonal Antibody, Unconjugated (ABIN731663) at 1:200, followed by conjugation to the secondary antibody and DAB staining.



Immunohistochemistry

Image 2. Formalin-fixed and paraffin embedded rat liver tissue labeled with Anti- Mannan Binding Lectin Polyclonal Antibody, Unconjugated (ABIN731663) at 1:200, followed by conjugation to the secondary antibody and DAB staining.



Immunohistochemistry

Image 3. Formalin-fixed and paraffin embedded human esophageal carcinoma labeled with Anti- Mannan Binding Lectin Polyclonal Antibody, Unconjugated (ABIN731663) at 1:200, followed by conjugation to the secondary antibody and DAB staining.