

Datasheet for ABIN7317043

**SPHK1 Protein****1** Image[Go to Product page](#)

## Overview

Quantity:	50 µg
Target:	SPHK1
Origin:	Human
Source:	Baculovirus infected Insect Cells
Protein Type:	Recombinant
Biological Activity:	Active

## Product Details

Purpose:	Recombinant Human SPHK1/Sphingosine Kinase 1 Protein (Active)
Sequence:	Met 1-Leu 384
Characteristics:	A DNA sequence encoding the human SPHK1 (Q9NYA1-1)(Met1-Leu384) was fused with two additional amino acids (Gly & Pro) at the N-terminus.
Purity:	> 85 % as determined by reducing SDS-PAGE.
Endotoxin Level:	< 1.0 EU per µg as determined by the LAL method.
Biological Activity Comment:	The specific activity was determined to be 1028 nmol/min/mg using Sphingosine Kinase Substrate as substrate.

## Target Details

Target:	SPHK1
Alternative Name:	SPHK1/Sphingosine Kinase 1 ( <a href="#">SPHK1 Products</a> )

## Target Details

Background:	<p>Background: SPHK1, also known as sphingosine Kinase 1, catalyzes the phosphorylation of sphingosine to form sphingosine-1-phosphate (S1P). S1P exhibits a broad spectrum of biological activities including cell proliferation, survival, migration, cytoskeletal organization, and morphogenesis. It is a ligand for cell surface G protein-coupled receptors. SPHK 1 is a potential therapeutic target for the control of cancer and inflammation. SPHK1 plays a key role in TNF-<math>\alpha</math> signaling and the NF-<math>\kappa</math>-B activation pathway important in inflammatory, antiapoptotic, and immune processes.</p> <p>Synonym: SPHK,SPHK1,SPK</p>
-------------	--

Molecular Weight:	42.7 kDa
-------------------	----------

Pathways:	<a href="#">VEGF Signaling</a>
-----------	--------------------------------

## Application Details

Restrictions:	For Research Use only
---------------	-----------------------

## Handling

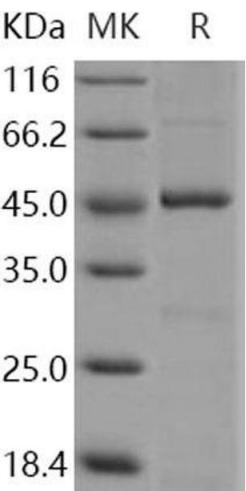
Format:	Frozen, Liquid
---------	----------------

Buffer:	Supplied as sterile 20 mM Tris, 500 mM NaCl, 10 % glycerol, pH 8.0
---------	--

Storage:	-20 °C
----------	--------

Storage Comment:	Store at < -20°C, stable for 6 months. Please minimize freeze-thaw cycles.
------------------	--

## Images



### Western Blotting

Image 1.