

Datasheet for ABIN7317063

MAP4K5 Protein (GST tag,His tag)[Go to Product page](#)**1** Image

Overview

Quantity:	50 µg
Target:	MAP4K5
Origin:	Human
Source:	Baculovirus infected Insect Cells
Protein Type:	Recombinant
Purification tag / Conjugate:	This MAP4K5 protein is labelled with GST tag,His tag.

Product Details

Purpose:	Recombinant Human MAP4K5/MEKKK5 Protein (His & GST Tag)
Sequence:	Met 1-Tyr 846
Characteristics:	A DNA sequence encoding the human MAP4K5 (NP_006566.2) (Met 1-Tyr 846) was fused with the N-terminal polyhistidine-tagged GST tag at the N-terminus.
Purity:	> 82 % as determined by reducing SDS-PAGE.
Endotoxin Level:	< 1.0 EU per µg as determined by the LAL method.

Target Details

Target:	MAP4K5
Alternative Name:	MAP4K5/MEKKK5 (MAP4K5 Products)
Background:	Background: Mitogen-activated protein kinase kinase kinase kinase 5, also known as Kinase homologous to SPS1/STE20, MAPK/ERK kinase kinase kinase 5, MEK kinase kinase 5 and MAP4K5, is a cytoplasm protein which belongs to the protein kinase superfamily, STE Ser/Thr

Target Details

protein kinase family and STE20 subfamily. MAP4K5 is ubiquitously expressed in all tissues examined, with high levels in the ovary, testis and prostate. It contains one CNH domain and one protein kinase domain. MAP4K5 is highly similar to yeast SPS1/STE20 kinase. Yeast SPS1/STE20 functions near the beginning of the MAP kinase signal cascades that is essential for yeast pheromone response. MAP4K5 has been shown to interact with CRKL and TRAF2. This kinase was shown to activate Jun kinase in mammalian cells. MAP4K5 is an early component of MAP kinase signal cascades. It may play a role in the response to environmental stress. MAP4K5 appears to act upstream of the JUN N-terminal pathway.

Synonym: GCKR;KHS;KHS1;MAPKKKK5

Molecular Weight: 123 kDa

NCBI Accession: [NP_006566](#)

Application Details

Restrictions: For Research Use only

Handling

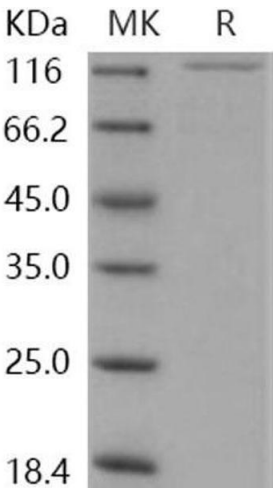
Format: Frozen, Liquid

Buffer: Supplied as sterile 50 mM Tris, 100 mM NaCl, 0.5 mM PMSF, 0.5 mM TCEP, pH 8.5

Storage: -20 °C

Storage Comment: Store at < -20°C, stable for 6 months. Please minimize freeze-thaw cycles.

Images



Western Blotting

Image 1.