



Datasheet for ABIN7317064
GRK6 Protein (GST tag,His tag)



[Go to Product page](#)

1 Image

Overview

Quantity:	50 µg
Target:	GRK6
Origin:	Human
Source:	Baculovirus infected Insect Cells
Protein Type:	Recombinant
Biological Activity:	Active
Purification tag / Conjugate:	This GRK6 protein is labelled with GST tag,His tag.

Product Details

Purpose:	Recombinant Human GRK6/GPRK6 Protein (His & GST Tag)(Active)
Sequence:	Met 1-Arg 589
Characteristics:	A DNA sequence encoding the human GRK6 isoform B (P43250-2) (Met 1-Arg 589) was fused with the N-terminal polyhistidine-tagged GST tag at the N-terminus.
Purity:	> 93 % as determined by reducing SDS-PAGE.
Endotoxin Level:	< 1.0 EU per µg as determined by the LAL method.
Biological Activity Comment:	The specific activity was determined to be 7 nmol/min/mg using casein as substrate.

Target Details

Target:	GRK6
Alternative Name:	GRK6/GPRK6 (GRK6 Products)

Target Details

Background: Background: G protein-coupled receptor kinase 6, also known as G protein-coupled receptor kinase GRK6, GRK6 and GPRK6, is a lipid-anchor protein which belongs to the protein kinase superfamily, AGC Ser/Thr protein kinase family and GPRK subfamily. GRK6 / GPRK6 contains one AGC-kinase C-terminal domain, one protein kinase domain and one RGS domain. This protein phosphorylates the activated forms of G protein-coupled receptors thus initiating their deactivation. Several transcript variants encoding different isoforms have been described. GRK6 / GPRK6 is widely expressed. GRK6 / GPRK6 silencing causes suppression of signal transducer and activator of transcription 3 (STAT3) phosphorylation associated with reduction in MCL1 levels and phosphorylation, illustrating a potent mechanism for the cytotoxicity of GRK6 inhibition in multiple myeloma (MM) tumor cells. GRK6 also appears to be involved in responses to morphine. Inhibition of GRK6 represents a uniquely targeted novel therapeutic strategy in human multiple myeloma.

Synonym: GPRK6

Molecular Weight: 95.1 kDa

Pathways: [Myometrial Relaxation and Contraction](#), [Regulation of G-Protein Coupled Receptor Protein Signaling](#), [CXCR4-mediated Signaling Events](#), [Negative Regulation of Transporter Activity](#)

Application Details

Restrictions: For Research Use only

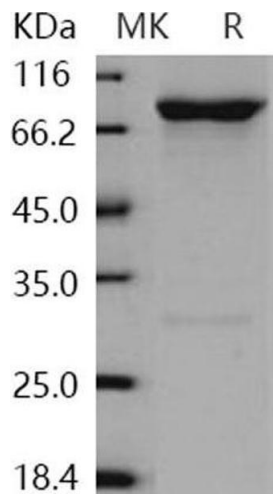
Handling

Format: Frozen, Liquid

Buffer: Supplied as sterile 20 mM Tris, 500 mM NaCl, 2 mM GSH, 0.5 mM PMSF, pH 7.4

Storage: -20 °C

Storage Comment: Store at < -20°C, stable for 6 months. Please minimize freeze-thaw cycles.



Western Blotting

Image 1.