

Datasheet for ABIN7317070

**CSNK1G1 Protein (GST tag,His tag)**[Go to Product page](#)**1** Image

## Overview

Quantity:	50 µg
Target:	CSNK1G1
Origin:	Human
Source:	Baculovirus infected Insect Cells
Protein Type:	Recombinant
Biological Activity:	Active
Purification tag / Conjugate:	This CSNK1G1 protein is labelled with GST tag,His tag.

## Product Details

Purpose:	Recombinant Human CSNK1G1/CKI-gamma 1 Protein (His & GST Tag)(Active)
Sequence:	Met 1-Lys 422
Characteristics:	A DNA sequence encoding full length of human CSNK1G1 (NP_071331.2) (Met 1-Lys 422) was fused with the N-terminal polyhistidine-tagged GST tag at the N-terminus.
Purity:	> 94 % as determined by reducing SDS-PAGE.
Endotoxin Level:	< 1.0 EU per µg as determined by the LAL method.
Biological Activity Comment:	The specific activity was determined to be 4 nmol/min/mg using casein as substrate.

## Target Details

Target:	CSNK1G1
Alternative Name:	CSNK1G1/CKI-gamma 1 ( <a href="#">CSNK1G1 Products</a> )

## Target Details

Background:	<p>Background: Casein kinase I isoform gamma-1, also known as CSNK1G1, is a member of the protein kinase superfamily, CK1 Ser/Thr protein kinase family and casein kinase I subfamily. The casein kinase I family of protein kinases are serine / threonine-selective enzymes that function as regulators of signal transduction pathways in most eukaryotic cell types. Casein has been used as a substrate since the earliest days of research on protein phosphorylation. Casein kinase activity associated with the endoplasmic reticulum of mammary glands was first characterized in 1974 and its activity was shown to not depend on cyclic AMP. The CKI family of monomeric serine-threonine protein kinases is found in eukaryotic organisms from yeast to human. Mammals have seven family members: alpha, beta 1, gamma 1, gamma 2, gamma 3, delta, and epsilon. The family members have the highest homology in their kinase domains (53%-98% identical) and differ from most other protein kinases by the presence of the sequence S-I-N instead of A-P-E in kinase domain VIII. The CKI family members appear to have similar substrate specificity and substrate selection is thought to be regulated via subcellular localization and docking sites in specific substrates.</p> <p>Synonym: CK1gamma1</p>
-------------	---

Molecular Weight:	76.3 kDa
-------------------	----------

NCBI Accession:	<a href="#">NP_071331</a>
-----------------	---------------------------

Pathways:	<a href="#">Hedgehog Signaling</a>
-----------	------------------------------------

## Application Details

Restrictions:	For Research Use only
---------------	-----------------------

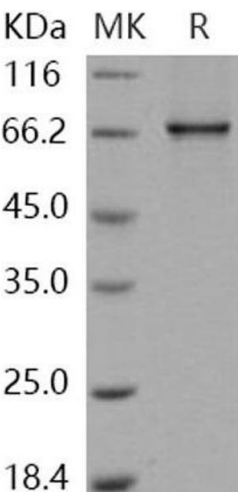
## Handling

Format:	Frozen, Liquid
---------	----------------

Buffer:	Supplied as sterile 20 mM Tris, 500 mM NaCl, 10 % glycerol, pH 7.4
---------	--

Storage:	-20 °C
----------	--------

Storage Comment:	Store at < -20°C, stable for 6 months. Please minimize freeze-thaw cycles.
------------------	--



Western Blotting

Image 1.