

Datasheet for ABIN7317080

CSNK2A2 Protein (GST tag,His tag)[Go to Product page](#)**1** Image

Overview

Quantity:	50 µg
Target:	CSNK2A2
Origin:	Human
Source:	Baculovirus infected Insect Cells
Protein Type:	Recombinant
Biological Activity:	Active
Purification tag / Conjugate:	This CSNK2A2 protein is labelled with GST tag,His tag.

Product Details

Purpose:	Recombinant Human CSNK2A2/CK2A2 Protein (His & GST Tag)(Active)
Sequence:	Met 1-Arg 350
Characteristics:	A DNA sequence encoding the human CSNK2A2 (NP_001887.1) (Met 1-Arg 350) was fused with the N-terminal polyhistidine-tagged GST tag at the N-terminus.
Purity:	> 92 % as determined by reducing SDS-PAGE.
Endotoxin Level:	< 1.0 EU per µg as determined by the LAL method.
Biological Activity Comment:	The specific activity was determined to be 30 nmol/min/mg using casein as substrate.

Target Details

Target:	CSNK2A2
Alternative Name:	CSNK2A2/CK2A2 (CSNK2A2 Products)

Target Details

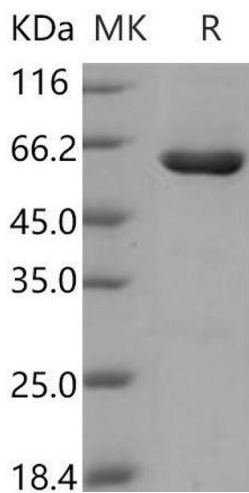
Background:	<p>Background: Casein kinase II subunit alpha', also known as CSNK2A2 and CK2A2, is a member of the protein kinase superfamily, Ser/Thr protein kinase family and CK2 subfamily. Casein kinases are operationally defined by their preferential utilization of acidic proteins such as caseins as substrates. The alpha and alpha' chains contain the catalytic site. CSNK2A2 is a tetramer composed of an alpha chain, an alpha' and two beta chains. It is also component of a CK2-SPT16-SSRP1 complex composed of SSRP1, SUPT16H, CSNK2A1, CSNK2A2 and CSNK2B, the complex associating following UV irradiation. Protein kinase casein kinase II (Ck2) is a cyclic-AMP and calcium-independent serine-threonine kinase that is composed of two catalytic subunits (alpha and alpha') and two regulatory beta-subunits. Ck2 is not a casein kinase in vivo, but over 100 substrates are known. The highly conserved amino acid sequences of its subunits and their broad expression suggest that Ck2 may have a fundamental role in cell function. Ck2 has been implicated in DNA replication, regulation of basal and inducible transcription, translation and control of metabolism. The Ck2alpha and Ck2alpha' isoforms (products of the genes Csnk2a1 and Csnk2a2, respectively) are highly homologous, the reason for their redundancy and evolutionary conservation is unknown. CSNK2A2 may be a candidate gene for these inherited syndromes.</p> <p>Synonym: CK2A2,CSNK2A1</p>
Molecular Weight:	69 kDa
NCBI Accession:	NP_001887
Pathways:	SARS-CoV-2 Protein Interactome

Application Details

Restrictions:	For Research Use only
---------------	-----------------------

Handling

Format:	Frozen, Liquid
Buffer:	Supplied as sterile 50 mM Tris, 500 mM NaCl, 0.5 mM PMSF, 0.5 mM TCEP, 10 % glycerol, pH 8.5
Storage:	-20 °C
Storage Comment:	Store at < -20°C, stable for 6 months. Please minimize freeze-thaw cycles.



Western Blotting

Image 1.