

Datasheet for ABIN7317086

EPH Receptor B2 Protein (EPHB2) (AA 570-987) (GST tag,His tag)[Go to Product page](#)**1** Image

Overview

Quantity:	50 µg
Target:	EPH Receptor B2 (EPHB2)
Protein Characteristics:	AA 570-987
Origin:	Human
Source:	Baculovirus infected Insect Cells
Protein Type:	Recombinant
Biological Activity:	Active
Purification tag / Conjugate:	This EPH Receptor B2 protein is labelled with GST tag,His tag.

Product Details

Purpose:	Recombinant Human EphB2 Protein (aa 570-987, His & GST Tag)(Active)
Sequence:	Gly570-Val987
Characteristics:	A DNA sequence encoding the human EPHB2 (P29323-3) (Gly570-Val987) was fused with the N-terminal polyhistidine-tagged GST tag at the N-terminus.
Purity:	> 90 % as determined by reducing SDS-PAGE.
Endotoxin Level:	< 1.0 EU per µg of the protein as determined by the LAL method.
Biological Activity Comment:	The specific activity was determined to be 120 nmol/min/mg using Poly(Glu:Tyr) 4:1 as substrate.

Target Details

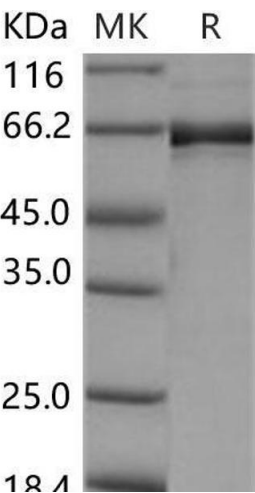
Target:	EPH Receptor B2 (EPHB2)
Alternative Name:	EphB2 (EPHB2 Products)
Background:	<p>Background: Ephrin type-B receptor 2, also known as EphB2, belongs to the ephrin receptor subfamily of the protein-tyrosine kinase family which 16 known receptors (14 found in mammals) are involved: EPHA1, EPHA2, EPHA3, EPHA4, EPHA5, EPHA6, EPHA7, EPHA8, EPHA9, EPHA10, EPHB1, EPHB2, EPHB3, EPHB4, EPHB5, EPHB6. EphB2 receptor tyrosine kinase phosphorylates syndecan-2 and that this phosphorylation event is crucial for syndecan-2 clustering and spine formation. The Eph family of receptor tyrosine kinases (comprising EphA and EphB receptors) has been implicated in synapse formation and the regulation of synaptic function and plasticity⁶. Ephrin receptors are components of cell signalling pathways involved in animal growth and development, forming the largest sub-family of receptor tyrosine kinases (RTKs). Ligand-mediated activation of Ephs induce various important downstream effects and Eph receptors have been studied for their potential roles in the development of cancer. EphB receptor tyrosine kinases are enriched at synapses, suggesting that these receptors play a role in synapse formation or function. We find that EphrinB binding to EphB induces a direct interaction of EphB with NMDA-type glutamate receptors. This interaction occurs at the cell surface and is mediated by the extracellular regions of the two receptors, but does not require the kinase activity of EphB.</p> <p>Synonym: CAPB,DRT,EK5,EPHT3,ERK,Hek5,PCBC,Tyro5,EPHB2,Ephrin type-B receptor 2</p>
Molecular Weight:	75.2 kDa
Pathways:	RTK Signaling , Regulation of long-term Neuronal Synaptic Plasticity , S100 Proteins

Application Details

Restrictions:	For Research Use only
---------------	-----------------------

Handling

Format:	Frozen, Liquid
Buffer:	Supplied as sterile 20 mM Tris, 500 mM NaCl, pH 7.4, 3 mM DTT, 10 % glycerol
Storage:	-20 °C
Storage Comment:	Store at < -20°C, stable for 6 months. Please minimize freeze-thaw cycles.



Western Blotting

Image 1.