

Datasheet for ABIN7317108
MAP2K6 Protein (GST tag,His tag)[Go to Product page](#)

1 Image

Overview

Quantity:	50 µg
Target:	MAP2K6
Origin:	Human
Source:	Baculovirus infected Insect Cells
Protein Type:	Recombinant
Biological Activity:	Active
Purification tag / Conjugate:	This MAP2K6 protein is labelled with GST tag,His tag.

Product Details

Purpose:	Recombinant Human MKK6 Protein (207 Ser/Asp, 211 Thr/Asp, His & GST Tag)(Active)
Sequence:	Met 1-Asp 334, Ser 207/Asp, Thr 211/Asp
Characteristics:	A DNA sequence encoding the human MAP2K6 isoform 1 (P52564-1) (Met 1-Asp 334, Ser 207/Asp, Thr 211/Asp) was fused with the N-terminal polyhistidine-tagged GST tag at the N-terminus.
Purity:	> 88 % as determined by reducing SDS-PAGE.
Endotoxin Level:	< 1.0 EU per µg as determined by the LAL method.
Biological Activity Comment:	The specific activity was determined to be 1250 nmol/min/mg using inactive MAPK14 as substrate.

Target Details

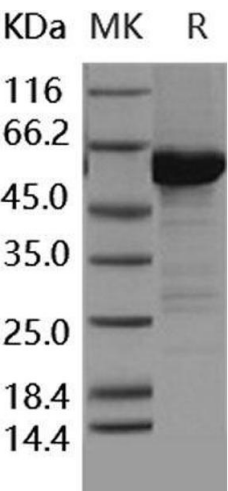
Target:	MAP2K6
---------	--------

Target Details

Alternative Name:	MKK6 (MAP2K6 Products)
Background:	<p>Background: Dual specificity mitogen-activated protein kinase kinase 6, also known as MAP kinase kinase 6, MAPKK 6, MAPK / ERK kinase 6, SAPKK3, MAP2K6 and MKK6, is a protein which belongs to the protein kinase superfamily, STE Ser / Thr protein kinase family and MAP kinase kinase subfamily. MAP2K6 / MKK6 contains one protein kinase domain. Mitogen-activated protein kinases are members of a conserved cascade of kinases involved in many signal transduction pathways. They stimulate phosphorylation of transcription factors in response to extracellular signals such as growth factors, cytokines, ultraviolet light, and stress-inducing agents. MAP2K6 / MKK6 exists in a variety of alternatively spliced isoforms with distinct patterns of tissue expression. Isoform 2 of MAP2K6 / MKK6 is only expressed in skeletal muscle. Isoform 1 of MAP2K6 / MKK6 is expressed in skeletal muscle, heart, and in lesser extent in liver or pancreas.</p> <p>Synonym: MAPKK6,MEK6,MKK6,PRKMK6,SAPKK-3,SAPKK3,MAP2K6</p>
Molecular Weight:	65.3 kDa
Pathways:	MAPK Signaling , TLR Signaling , Activation of Innate immune Response , Regulation of Muscle Cell Differentiation , Toll-Like Receptors Cascades

Application Details

Restrictions:	For Research Use only
Handling	
Format:	Frozen, Liquid
Buffer:	Supplied as sterile 20 mM Tris, 500 mM NaCl, pH 8.0, 10 % glycerol
Storage:	-20 °C
Storage Comment:	Store at < -20°C, stable for 6 months. Please minimize freeze-thaw cycles.



Western Blotting

Image 1.