

Datasheet for ABIN731843
anti-Cathepsin G antibody (AA 41-120)[Go to Product page](#)

1 Image

Overview

Quantity:	100 µL
Target:	Cathepsin G (CTSG)
Binding Specificity:	AA 41-120
Reactivity:	Human, Rat
Host:	Rabbit
Clonality:	Polyclonal
Conjugate:	This Cathepsin G antibody is un-conjugated
Application:	Western Blotting (WB), ELISA, Immunofluorescence (Cultured Cells) (IF (cc)), Immunofluorescence (Paraffin-embedded Sections) (IF (p)), Immunohistochemistry (Paraffin-embedded Sections) (IHC (p)), Immunohistochemistry (Frozen Sections) (IHC (fro))

Product Details

Immunogen:	KLH conjugated synthetic peptide derived from human Cathepsin G
Isotype:	IgG
Cross-Reactivity:	Human, Rat
Predicted Reactivity:	Mouse,Dog,Cow,Sheep,Horse,Rabbit
Purification:	Purified by Protein A.

Target Details

Target:	Cathepsin G (CTSG)
---------	--------------------

Target Details

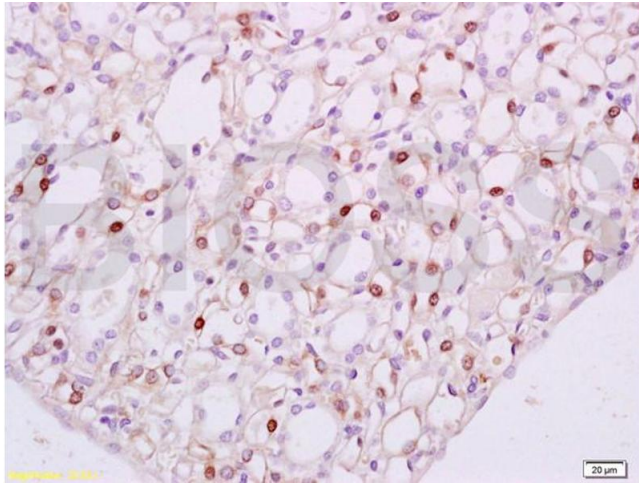
Alternative Name:	Cathepsin G (CTSG Products)
Background:	<p>Synonyms: Cathepsin G, CG, Cathepsin G precursor, CathepsinG, CTSG, CTSG protein, MGC23078, CATG_HUMAN.</p> <p>Background: Cathepsin G is a serine protease, it consisting of a single polypeptide with a molecular weight of 30 kDa as determined by SDS-PAGE. Its substrates are collagen and proteoglycans. Poor regulation of Cathepsin G levels has been associated with various connective tissue disorders, for example pulmonary emphysema and cystic fibrosis.</p>
Gene ID:	1511
Pathways:	ACE Inhibitor Pathway , Peptide Hormone Metabolism , Regulation of Systemic Arterial Blood Pressure by Hormones

Application Details

Application Notes:	WB 1:300-5000 ELISA 1:500-1000 FCM 1:20-100 IHC-P 1:200-400 IHC-F 1:100-500 IF(IHC-P) 1:50-200 IF(IHC-F) 1:50-200 IF(ICC) 1:50-200
Restrictions:	For Research Use only

Handling

Format:	Liquid
Concentration:	1 µg/µL
Buffer:	0.01M TBS(pH 7.4) with 1 % BSA, 0.02 % Proclin300 and 50 % Glycerol.
Preservative:	ProClin
Precaution of Use:	This product contains ProClin: a POISONOUS AND HAZARDOUS SUBSTANCE, which should be handled by trained staff only.
Storage:	4 °C,-20 °C
Storage Comment:	Shipped at 4°C. Store at -20°C for one year. Avoid repeated freeze/thaw cycles.



Immunohistochemistry

Image 1. Formalin-fixed and paraffin embedded rat kidney tissue labeled with Anti-Cathepsin G Polyclonal Antibody, Unconjugated (ABIN731843) at 1:100 followed by conjugation to the secondary antibody, (SP-0023), and DAB staining