



[Go to Product page](#)

Datasheet for ABIN7319787

## IL36A/IL1F6 Protein

### 2 Images

#### Overview

Quantity:	100 µg
Target:	IL36A/IL1F6 (IL1F6)
Origin:	Human
Source:	Escherichia coli (E. coli)
Protein Type:	Recombinant
Biological Activity:	Active

#### Product Details

Purpose:	Recombinant Human Interleukin-36 alpha/IL-36 alpha
Sequence:	Lys6-Phe158
Characteristics:	Recombinant Human Interleukin-36 Alpha is produced by our E.coli expression system and the target gene encoding Lys6-Phe158 is expressed.
Purity:	>95 % as determined by reducing SDS-PAGE.
Endotoxin Level:	< 1.0 EU per µg as determined by the LAL method.
Biological Activity Comment:	Measured in a cell proliferation assay using A-431 Human epithelial carcinoma cells. The ED50 for this effect is 12.0 ng/ml.

#### Target Details

Target:	IL36A/IL1F6 (IL1F6)
Alternative Name:	Interleukin-36 alpha/IL-36 alpha ( <a href="#">IL1F6 Products</a> )

## Target Details

---

**Background:** Background: Human Interleukin-36 $\alpha$  (IL-36 $\alpha$ ) is a secreted cytokine that belongs to the Interleukin 1 cytokine family. IL-36 $\alpha$  is expressed in the immune system and the fetal brain, but not in other tissues or multiple hematopoietic cell lines. IL-36 $\alpha$  is the only IL-1 family member found to be expressed on T-cells. IL-36 $\alpha$  and IL-1F8 are involved in the regulation of adipose tissue gene expression. Importantly, IL-36 $\alpha$  inhibits PPAR $\gamma$  expression, which may lead to a reduction in adipocyte differentiation suggesting metabolic effects of this cytokine. IL-36 $\alpha$ , along with IL-1F8 and IL-1F9, has been shown to act as an agonist by activating the pathway involving NF $\kappa$ B and MAPK in an IL-1Rrp2 dependent manner. This suggest that IL-36 $\alpha$  may signal in a similar fashion to IL-1 and IL-18 in having a binding receptor which upon ligation, recruits a second receptor as a signaling component, forming an active heterodimeric receptor complex.

Synonym: Interleukin-36 Alpha, FIL1 Epsilon, Interleukin-1 Epsilon, IL-1 Epsilon, Interleukin-1 Family Member 6, IL-1F6, IL36A, FIL1E, IL1E, IL1F6

---

**Molecular Weight:** 17.1 kDa

---

**UniProt:** [Q9UHA7](#)

---

**Pathways:** [Cancer Immune Checkpoints](#)

## Application Details

---

**Restrictions:** For Research Use only

## Handling

---

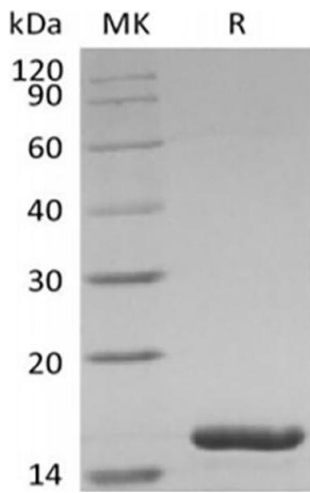
**Format:** Lyophilized

**Reconstitution:** Please refer to the printed manual for detailed information.

**Buffer:** Lyophilized from a 0.2  $\mu$ m filtered solution of 50 mM Tris-HCl, 150 mM NaCl, 1 mM EDTA, 0.02 % Tween 20, pH 8.0.

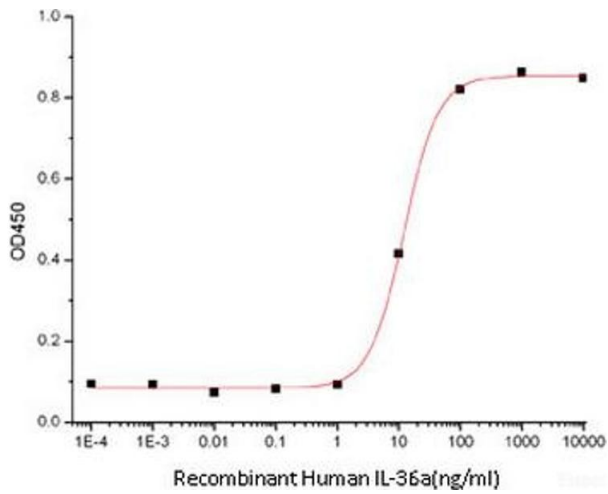
**Storage:** 4 °C, -20 °C, -80 °C

**Storage Comment:** Generally, lyophilized proteins are stable for up to 12 months when stored at -20 to -80°C. Reconstituted protein solution can be stored at 4-8°C for 2-7 days. Aliquots of reconstituted samples are stable at < -20°C for 3 months.



### Western Blotting

Image 1.



### ELISA

Image 2.