



[Go to Product page](#)

Datasheet for ABIN7319791

ESM1 Protein (His tag)

1 Image

Overview

Quantity:	50 µg
Target:	ESM1
Origin:	Human
Source:	Human Cells
Protein Type:	Recombinant
Purification tag / Conjugate:	This ESM1 protein is labelled with His tag.

Product Details

Purpose:	Recombinant Human Endocan/ESM-1 (C-6His)
Sequence:	Trp20-Arg184
Characteristics:	Recombinant Human Endothelial Cell-Specific Molecule 1 is produced by our Mammalian expression system and the target gene encoding Trp20-Arg184 is expressed with a 6His tag at the C-terminus.
Purity:	>90 % as determined by reducing SDS-PAGE.
Endotoxin Level:	< 1.0 EU per µg as determined by the LAL method.

Target Details

Target:	ESM1
Alternative Name:	Endocan/ESM-1 (ESM1 Products)
Background:	Background: ESM-1, short from Endothelial cell-specific molecule 1, is expressed in lung, on the vascular capillary network within alveolar walls, and also at lower level in kidney. It is a secretory

Target Details

protein, and can be induced by TNF and IL1B/interleukin-1beta, but not IL4/interleukin-4. This protein plays great roles in angiogenesis, sprouting, and may have potent implications in lung endothelial cell-leukocyte interactions.

Synonym: Endothelial Cell-Specific Molecule 1, ESM-1, ESM1

Molecular Weight: 19.16 kDa

Pathways: [Growth Factor Binding](#)

Application Details

Restrictions: For Research Use only

Handling

Format: Lyophilized

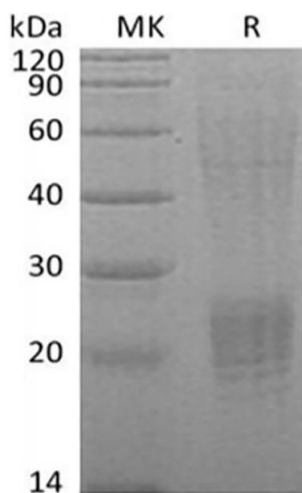
Reconstitution: Please refer to the printed manual for detailed information.

Buffer: Lyophilized from a 0.2 µm filtered solution of 20 mM PB, 150 mM NaCl, pH 7.2.

Storage: 4 °C, -20 °C, -80 °C

Storage Comment: Generally, lyophilized proteins are stable for up to 12 months when stored at -20 to -80°C. Reconstituted protein solution can be stored at 4-8°C for 2-7 days. Aliquots of reconstituted samples are stable at < -20°C for 3 months.

Images



Western Blotting

Image 1.