

Datasheet for ABIN7319857
CD22 Protein (His tag,Biotin)[Go to Product page](#)

1 Image

Overview

Quantity:	100 µg
Target:	CD22
Origin:	Human
Source:	Human Cells
Protein Type:	Recombinant
Biological Activity:	Active
Purification tag / Conjugate:	This CD22 protein is labelled with His tag,Biotin.

Product Details

Purpose:	Recombinant Human B-cell Receptor CD22/Siglec-2/CD22 (C-6His) Biotinylated
Sequence:	Asp20-Arg687
Characteristics:	Biotinylated Recombinant Human B-cell Receptor CD22 is produced by our Mammalian expression system and the target gene encoding Asp20-Arg687 is expressed with a 6His, Avi tag at the C-terminus.
Purity:	>95 % as determined by reducing SDS-PAGE.
Endotoxin Level:	< 1.0 EU per µg as determined by the LAL method.
Biological Activity Comment:	Loaded Biotinylated Human Siglec-2-His-Avi(Cat#CY36) on HIS1K Biosensor, can bind Anti-Human Siglec-2 mAb-Fc(Cat#NC013) with an affinity constant of 0.16 nM as determined in BLI assay.

Target Details

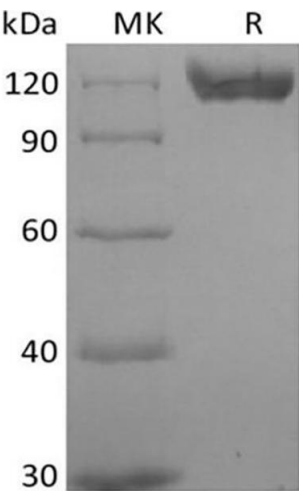
Target:	CD22
Alternative Name:	CD22 (CD22 Products)
Background:	<p>Background: Siglecs (sialic acid binding Ig-like lectins) are I-type (Ig-type) lectins belonging to the Ig superfamily. They are characterized by an N-terminal Ig-like V-type domain which mediates sialic acid binding, followed by varying numbers of Ig-like C2-type domains. Human Siglec-2, also known as B-cell antigen CD22 or B-lymphocyte cell adhesion molecule (BL-CAM), is a B-cell restricted glycoprotein that is expressed in the cytoplasm of progenitor B and pre-B cells and on the surface of mature B cells. Two distinct human Siglec-2/CD22 cDNAs that arise from differential RNA processing of the same gene have been isolated. Siglec-2/CD22 is an adhesion molecule that preferentially binds alpha 2,6- linked sialic acid on the same (cis) or adjacent (trans) cells. Interaction of CD22 with trans ligands on opposing cells was found to be favored over the binding of ligands in cis.</p> <p>Synonym: B-cell receptor CD22, BL-CAM, B-lymphocyte cell adhesion molecule, CD22 antigenMGC130020, CD22 Molecule, CD22, sialic acid binding Ig-like lectin 2, Siglec-2, SIGLEC2FLJ22814, T-cell surface antigen Leu-14</p>
Molecular Weight:	78 kDa
UniProt:	P20273

Application Details

Comment:	110-130 kDa
Restrictions:	For Research Use only

Handling

Format:	Lyophilized
Reconstitution:	Please refer to the printed manual for detailed information.
Buffer:	Lyophilized from a 0.2 µm filtered solution of PBS, pH 7.4.
Storage:	4 °C,-20 °C,-80 °C
Storage Comment:	<p>Generally, lyophilized proteins are stable for up to 12 months when stored at -20 to -80°C.</p> <p>Reconstituted protein solution can be stored at 4-8°C for 2-7 days. Aliquots of reconstituted samples are stable at < -20°C for 3 months.</p>



Western Blotting

Image 1.