

Datasheet for ABIN7319916

**RCN2 Protein (His tag)**[Go to Product page](#)**1** Image

## Overview

Quantity:	50 µg
Target:	RCN2
Origin:	Human
Source:	Human Cells
Protein Type:	Recombinant
Purification tag / Conjugate:	This RCN2 protein is labelled with His tag.

## Product Details

Purpose:	Recombinant Human RCN2 (C-6His)
Sequence:	Gly23-Leu317
Characteristics:	Recombinant Human Reticulocalbin-2 is produced by our Mammalian expression system and the target gene encoding Gly23-Leu317 is expressed with a 6His tag at the C-terminus.
Purity:	>95 % as determined by reducing SDS-PAGE.
Endotoxin Level:	< 1.0 EU per µg as determined by the LAL method.

## Target Details

Target:	RCN2
Alternative Name:	RCN2 ( <a href="#">RCN2 Products</a> )
Background:	Background: Reticulocalbin-2 (RCN2, also named as ERC-55), is a 55- kDa Ca <sup>2+</sup> -binding protein containing six EF-hands, which was identified to be localized in endoplasmic reticulum. RCN2 is belonging to Reticulocalbin (RCN) family, the family members could play oncogenic roles in

## Target Details

human malignancies and facilitate tumor cell proliferation and metastasis. Recently, studies on RCN2 functions mainly focused on its role in differentiation and endocrine regulation in mouse. Another study has suggested that RCN2 could be a potential tumor-associated antigen for mammary cancer immunological prevention. Up to now, the experimental evidence uncovering the role of RCN2 in cancer is very limited.

Synonym: Reticulocalbin-2, RCN2, E6BP, ERC55

Molecular Weight: 35.6 kDa

UniProt: [Q14257](#)

## Application Details

Restrictions: For Research Use only

## Handling

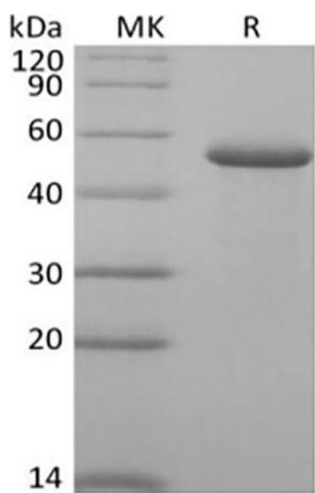
Format: Frozen, Liquid

Buffer: Supplied as a 0.2 µm filtered solution of 20 mM Tris-HCl, 10 % Glycerol, 1 mM DTT, pH 8.0.

Storage: -20 °C

Storage Comment: Store at < -20°C, stable for 6 months. Please minimize freeze-thaw cycles.

## Images



### Western Blotting

Image 1.