

Datasheet for ABIN7320004

CSNK2A1/CK II alpha Protein (GST tag,His tag)[Go to Product page](#)**1** Image

Overview

| | |
|-------------------------------|--|
| Quantity: | 50 µg |
| Target: | CSNK2A1/CK II alpha (CSNK2A1) |
| Origin: | Mouse |
| Source: | Baculovirus infected Insect Cells |
| Protein Type: | Recombinant |
| Biological Activity: | Active |
| Purification tag / Conjugate: | This CSNK2A1/CK II alpha protein is labelled with GST tag,His tag. |

Product Details

| | |
|------------------------------|--|
| Purpose: | Recombinant Mouse CSNK2A1/CK2A1 Protein (His & GST Tag)(Active) |
| Sequence: | Met1-Gln391 |
| Characteristics: | A DNA sequence encoding the mouse CSNK2A1 (Q60737) (Met1-Gln391) was fused with the N-terminal polyhistidine-tagged GST tag at the N-terminus. |
| Purity: | > 85 % as determined by SDS-PAGE |
| Endotoxin Level: | < 1.0 EU per µg of the protein as determined by the LAL method. |
| Biological Activity Comment: | The specific activity was determined to be 34 nmol/min/mg using casein as substrate. |

Target Details

| | |
|-------------------|--|
| Target: | CSNK2A1/CK II alpha (CSNK2A1) |
| Alternative Name: | CSNK2A1/CK2A1 (CSNK2A1 Products) |

Target Details

| | |
|-------------|--|
| Background: | <p>Background: Casein kinase II subunit alpha, also known as CK II alpha, CSNK2A1 and CK2A1, is a member of the protein kinase superfamily, Ser / Thr protein kinase family and CK2 subfamily. Casein kinase II (CSNK2A1) is a serine / threonine protein kinase that phosphorylates acidic proteins such as casein. This kinase is composed of an alpha, an alpha-prime, and two beta subunits. The alpha subunits contain the catalytic activity while the beta subunits undergo autophosphorylation. Casein kinase II (CSNK2A1) is a constitutively active, ubiquitously expressed serine / threonine protein kinase that is thought to have a regulatory function in cell proliferation, cell differentiation and apoptosis. CSNK2A1 functions as a tetrameric complex consisting of two regulatory beta-subunits and two catalytic units (alpha and alpha') in a homomeric or heteromeric conformation. Whilst the alpha- and alpha'-subunits are catalytically identical, proteins that regulate CSNK2A1, such as cdc2 and Hsp90, preferentially bind to the alpha and not the alpha'-subunit. CSNK2A1 can phosphorylate a number of key intracellular signaling proteins implicated in tumor suppression (p53 and PTEN) and tumorigenesis (myc, jun, NF-kappaB). CSNK2A1 is also thought to influence Wnt signaling via beta-catenin phosphorylation and the PI 3-K signaling pathway via the phosphorylation of Akt.</p> <p>Synonym: Csnk2a1-rs4</p> |
|-------------|--|

| | |
|-------------------|----------|
| Molecular Weight: | 72.9 kDa |
|-------------------|----------|

| | |
|----------|------------------------|
| UniProt: | Q60737 |
|----------|------------------------|

| | |
|-----------|--|
| Pathways: | SARS-CoV-2 Protein Interactome |
|-----------|--|

Application Details

| | |
|---------------|-----------------------|
| Restrictions: | For Research Use only |
|---------------|-----------------------|

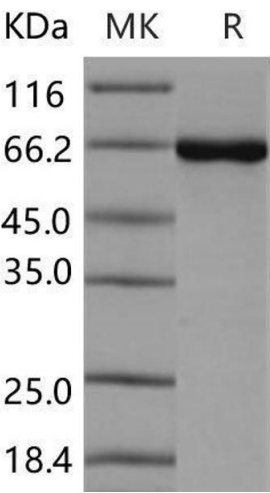
Handling

| | |
|---------|----------------|
| Format: | Frozen, Liquid |
|---------|----------------|

| | |
|---------|--|
| Buffer: | Supplied as sterile 20 mM Tris, 500 mM NaCl, pH 8.0, 10 % glycerol |
|---------|--|

| | |
|----------|--------|
| Storage: | -20 °C |
|----------|--------|

| | |
|------------------|--|
| Storage Comment: | Store at < -20°C, stable for 6 months. Please minimize freeze-thaw cycles. |
|------------------|--|



Western Blotting

Image 1.