

Datasheet for ABIN7320020
SMPDL3A Protein (His tag)[Go to Product page](#)

1 Image

Overview

| | |
|-------------------------------|--|
| Quantity: | 100 µg |
| Target: | SMPDL3A |
| Origin: | Mouse |
| Source: | HEK-293 Cells |
| Protein Type: | Recombinant |
| Purification tag / Conjugate: | This SMPDL3A protein is labelled with His tag. |

Product Details

| | |
|------------------|---|
| Purpose: | Recombinant Mouse SMPDL3A Protein (His Tag) |
| Sequence: | Met1-Leu445 |
| Characteristics: | A DNA sequence encoding the mouse Smpdl3a (NP_065586.3) (Met1-Leu445) was expressed with a polyhistidine tag at the C-terminus. |
| Purity: | > 95 % as determined by SDS-PAGE |
| Endotoxin Level: | < 1.0 EU per µg of the protein as determined by the LAL method. |

Target Details

| | |
|-------------------|--|
| Target: | SMPDL3A |
| Alternative Name: | SMPDL3A (SMPDL3A Products) |
| Background: | Background: SMPDL3A gene is a novel liver X receptor (LXR) -regulated gene, with an LXR response element within its promoter. The induction of SMPDL3A is LXR-dependent and is restricted to human blood cells with no induction observed in mouse cellular systems. LXR α |

Target Details

and LXR β function as physiological sensors of cholesterol metabolites (oxysterols), regulating key genes involved in cholesterol and lipid metabolism. LXRs have been extensively studied in both human and rodent cell systems, revealing their potential therapeutic value in the contexts of atherosclerosis and inflammatory diseases. The LXR genome landscape has been investigated in murine macrophages but not in human THP-1 cells, which represent one of the frequently used monocyte/macrophage cell systems to study immune responses.

Synonym: 0610010C24Rik,AI529588,ASM3A,ASML3,ASML3A

Molecular Weight: 49.1 kDa

NCBI Accession: [NP_065586](#)

Application Details

Restrictions: For Research Use only

Handling

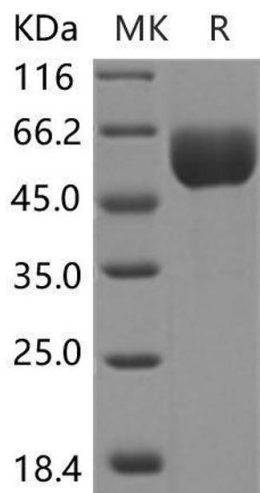
Format: Lyophilized

Reconstitution: Please refer to the printed manual for detailed information.

Buffer: Lyophilized from sterile PBS, pH 7.4

Storage: 4 °C, -20 °C, -80 °C

Storage Comment: Generally, lyophilized proteins are stable for up to 12 months when stored at -20 to -80°C. Reconstituted protein solution can be stored at 4-8°C for 2-7 days. Aliquots of reconstituted samples are stable at < -20°C for 3 months.



Western Blotting

Image 1.