



[Go to Product page](#)

Datasheet for ABIN7320022  
**SCPEP1 Protein (His tag)**

1 Image

### Overview

Quantity:	100 µg
Target:	SCPEP1
Origin:	Mouse
Source:	HEK-293 Cells
Protein Type:	Recombinant
Purification tag / Conjugate:	This SCPEP1 protein is labelled with His tag.

### Product Details

Purpose:	Recombinant Mouse SCPEP1/RISC Protein (His Tag)
Sequence:	Met1-Glu452
Characteristics:	A DNA sequence encoding the mouse Scep1 (NP_083299.3) (Met1-Glu452) was expressed with a polyhistidine tag at the C-terminus.
Purity:	> 95 % as determined by SDS-PAGE
Endotoxin Level:	< 1.0 EU per µg of the protein as determined by the LAL method.

### Target Details

Target:	SCPEP1
Alternative Name:	SCPEP1/RISC ( <a href="#">SCPEP1 Products</a> )
Background:	2410018F01Rik,4833411K15Rik,AI957256,Risc
Molecular Weight:	49.3 kDa

## Target Details

---

NCBI Accession: [NP\\_083299](#)

## Application Details

---

Restrictions: For Research Use only

## Handling

---

Format: Lyophilized

Reconstitution: Please refer to the printed manual for detailed information.

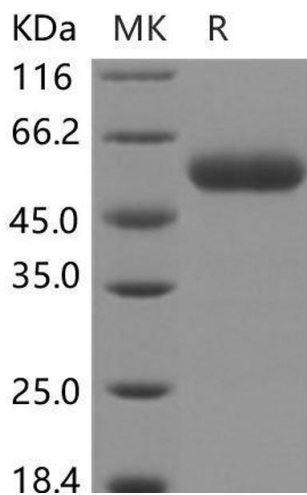
Buffer: Lyophilized from sterile PBS, pH 7.4

Storage: 4 °C, -20 °C, -80 °C

Storage Comment: Generally, lyophilized proteins are stable for up to 12 months when stored at -20 to -80°C. Reconstituted protein solution can be stored at 4-8°C for 2-7 days. Aliquots of reconstituted samples are stable at < -20°C for 3 months.

## Images

---



### Western Blotting

Image 1.