

Datasheet for ABIN7320061
CREG1 Protein (Fc Tag)[Go to Product page](#)

1 Image

Overview

Quantity:	50 µg
Target:	CREG1
Origin:	Mouse
Source:	HEK-293 Cells
Protein Type:	Recombinant
Purification tag / Conjugate:	This CREG1 protein is labelled with Fc Tag.

Product Details

Purpose:	Recombinant Mouse CREG/CREG1 Protein (Fc Tag)
Sequence:	Met1-Gln220
Characteristics:	A DNA sequence encoding the mouse CREG (O88668)(Met1-Gln220) was expressed with the Fc region of human IgG1 at the C-terminus.
Purity:	> 90 % as determined by SDS-PAGE
Endotoxin Level:	< 1.0 EU per µg of the protein as determined by the LAL method.

Target Details

Target:	CREG1
Alternative Name:	CREG/CREG1 (CREG1 Products)
Background:	Background: CREG1 belongs to the CREG family. It is a adenovirus E1A protein which both activates and represses gene expression to promote cellular proliferation and inhibit differentiation. Thus it may contribute to the transcriptional control of cell growth and

Target Details

differentiation. The transcriptional control activity of cell growth requires interaction with IGF2R. CREG1 also antagonizes transcriptional activation and cellular transformation by E1A. It shares limited sequence similarity with E1A and binds both the general transcription factor TBP and the tumor suppressor pRb in vitro. CREG1 gene may contribute to the transcriptional control of cell growth and differentiation.

Synonym: CREG1, cellular repressor of E1A-stimulated genes, cellular repressor of E1A-stimulated genes 1CREG, protein CREG1

Molecular Weight:	48.5 kDa
-------------------	----------

UniProt:	O88668
----------	------------------------

Application Details

Restrictions:	For Research Use only
---------------	-----------------------

Handling

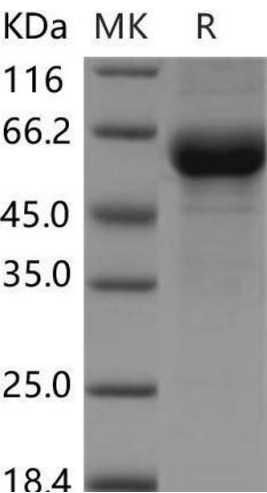
Format:	Lyophilized
---------	-------------

Reconstitution:	Please refer to the printed manual for detailed information.
-----------------	--

Buffer:	Lyophilized from sterile PBS, pH 7.4
---------	--------------------------------------

Storage:	4 °C, -20 °C, -80 °C
----------	----------------------

Storage Comment:	Generally, lyophilized proteins are stable for up to 12 months when stored at -20 to -80°C. Reconstituted protein solution can be stored at 4-8°C for 2-7 days. Aliquots of reconstituted samples are stable at < -20°C for 3 months.
------------------	---



Western Blotting

Image 1.