

Datasheet for ABIN732008  
**anti-SATB1 antibody (AA 671-764)**



[Go to Product page](#)

2 Images

## Overview

|                      |  |
|----------------------|--|
| Quantity:            | 100 µL   |
| Target:              | SATB1  |
| Binding Specificity: | AA 671-764   |
| Reactivity:          | Human, Mouse   |
| Host:                | Rabbit   |
| Clonality:           | Polyclonal   |
| Conjugate:           | This SATB1 antibody is un-conjugated   |
| Application:         | Western Blotting (WB), ELISA, Flow Cytometry (FACS), Immunohistochemistry (Paraffin-embedded Sections) (IHC (p)) |

## Product Details

|                       |   |
|-----------------------|---|
| Immunogen:            | KLH conjugated synthetic peptide derived from mouse SATB1 |
| Isotype:              | IgG   |
| Cross-Reactivity:     | Human, Mouse  |
| Predicted Reactivity: | Rat   |
| Purification:         | Purified by Protein A.                                    |

## Target Details

|                   |  |
|-------------------|--|
| Target:           | SATB1                                    |
| Alternative Name: | SATB1 ( <a href="#">SATB1 Products</a> ) |

## Target Details

---

**Background:** Synonyms: AW413156, 2610306G12Rik, DNA-binding protein SATB1, Special AT-rich sequence-binding protein 1, Satb1

Background: Required for the switching of fetal globin species, and beta- and gamma-globin genes regulation during erythroid differentiation. Plays a role in chromatin organization and nuclear architecture during apoptosis (By similarity). Crucial silencing factor contributing to the initiation of X inactivation mediated by Xist RNA that occurs during embryogenesis and in lymphoma. Binds to DNA at special AT-rich sequences, the consensus SATB1-binding sequence (CSBS), at nuclear matrix- or scaffold-associated regions. Thought to recognize the sugar-phosphate structure of double-stranded DNA. Transcriptional repressor controlling nuclear and viral gene expression in a phosphorylated and acetylated status-dependent manner, by binding to matrix attachment regions (MARs) of DNA and inducing a local chromatin-loop remodeling. Acts as a docking site for several chromatin remodeling enzymes and also by recruiting corepressors (HDACs) or coactivators (HATs) directly to promoters and enhancers. Modulates genes that are essential in the maturation of the immune T-cell CD8SP from thymocytes.

---

**Gene ID:** 20230

---

**UniProt:** [Q60611](#)

---

**Pathways:** [Caspase Cascade in Apoptosis, Activated T Cell Proliferation](#)

## Application Details

---

**Application Notes:** WB 1:300-5000  
ELISA 1:500-1000  
FCM 1:20-100  
IHC-P 1:200-400

---

**Restrictions:** For Research Use only

## Handling

---

**Format:** Liquid

---

**Concentration:** 1 µg/µL

---

**Buffer:** 0.01M TBS( pH 7.4) with 1 % BSA, 0.02 % Proclin300 and 50 % Glycerol.

---

**Preservative:** ProClin

---

**Precaution of Use:** This product contains ProClin: a POISONOUS AND HAZARDOUS SUBSTANCE, which should be

---

## Handling

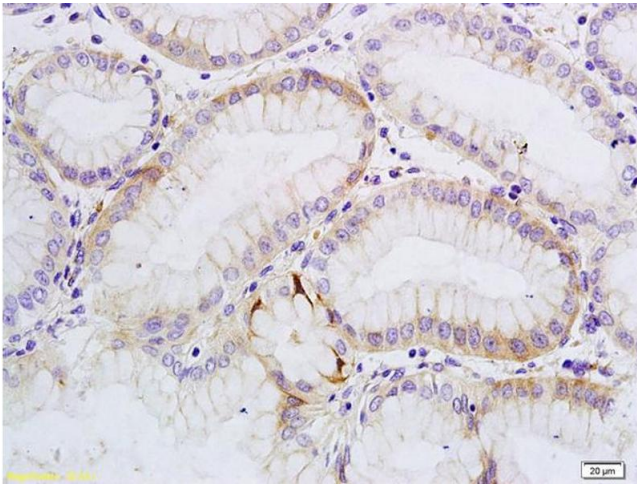
handled by trained staff only.

Storage: 4 °C,-20 °C

Storage Comment: Shipped at 4°C. Store at -20°C for one year. Avoid repeated freeze/thaw cycles.

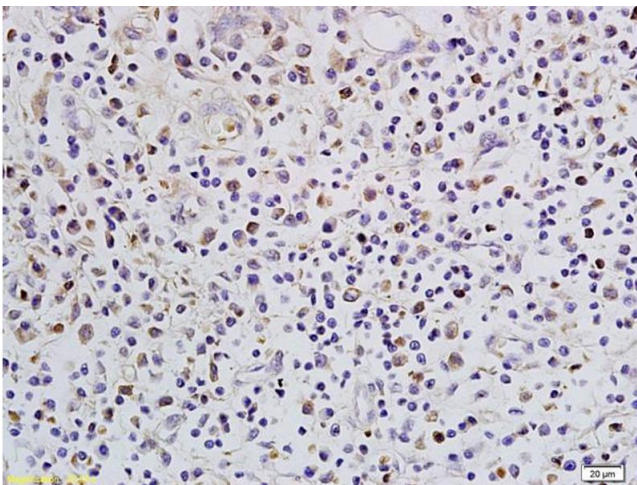
Expiry Date: 12 months

## Images



### Immunohistochemistry

**Image 1.** Formalin-fixed and paraffin embedded human gastric cancer labeled with Anti-SATB1 Polyclonal Antibody, Unconjugated (ABIN732008) followed by conjugation to the secondary antibody and DAB staining



### Immunohistochemistry

**Image 2.** Formalin-fixed and paraffin embedded human colon cancer labeled with Anti-SATB1 Polyclonal Antibody, Unconjugated (ABIN732008) followed by conjugation to the secondary antibody and DAB staining