

Datasheet for ABIN7320106  
**NAALADL1 Protein (His tag)**[Go to Product page](#)

## 1 Image

## Overview

Quantity:	50 µg
Target:	NAALADL1
Origin:	Mouse
Source:	HEK-293 Cells
Protein Type:	Recombinant
Purification tag / Conjugate:	This NAALADL1 protein is labelled with His tag.

## Product Details

Purpose:	Recombinant Mouse NAALADL1 Protein (His Tag)
Sequence:	Pro 29-Leu 745
Characteristics:	A DNA sequence encoding the secreted form of mouse NAALADL1 (Q7M758) (Pro 29-Leu 745) was fused with a polyhistidine tag at the N-terminus.
Purity:	> 97 % as determined by SDS-PAGE
Endotoxin Level:	< 1.0 EU per µg of the protein as determined by the LAL method.

## Target Details

Target:	NAALADL1
Alternative Name:	NAALADL1 ( <a href="#">NAALADL1 Products</a> )
Background:	Background: N-acetylated-alpha-linked acidic dipeptidase-like protein, also known as NAALADL1, NAALADase L, and Ileal dipeptidylpeptidase, is a Single-pass type I I membrane protein and a member of the peptidase M28 family and M28B subfamily. NAALADase L is

## Target Details

mainly expressed in the distal small intestine. It is also expressed in the spleen and testis and Weakly expressed in the brain, locating mainly to the brain stem, amygdala, thalamus and ventral striatum. NAALADase L is a chloride-activated, membrane bound, metallopeptidase that cleaves the endogenous neuropeptide N-acetyl-aspartyl-glutamate (NAAG). NAAG acts as a partial NMDA agonist as well as a full agonist at the presynaptic metabotropic glutamate receptor 3 (mGluR3), where it acts to reduce glutamate release. NAALADase L also exhibits a dipeptidyl-peptidase IV type activity. NAALADase inhibition may be a novel therapeutic approach to reduce or inhibit heightened aggressiveness, and possibly to treat aggressive behavior associated with psychiatric disorders.

Synonym: Gm964,NaaladaseI

Molecular Weight: 80 kDa

UniProt: [Q7M758](#)

## Application Details

Restrictions: For Research Use only

## Handling

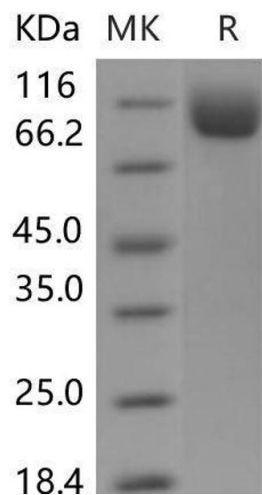
Format: Lyophilized

Reconstitution: Please refer to the printed manual for detailed information.

Buffer: Lyophilized from sterile PBS, pH 7.4

Storage: 4 °C,-20 °C,-80 °C

Storage Comment: Generally, lyophilized proteins are stable for up to 12 months when stored at -20 to -80°C. Reconstituted protein solution can be stored at 4-8°C for 2-7 days. Aliquots of reconstituted samples are stable at < -20°C for 3 months.



**Western Blotting**

**Image 1.**