

Datasheet for ABIN7320182

**DCL1 Protein (Fc Tag)****1** Image[Go to Product page](#)

## Overview

Quantity:	100 µg
Target:	DCL1 (CD302)
Origin:	Mouse
Source:	HEK-293 Cells
Protein Type:	Recombinant
Purification tag / Conjugate:	This DCL1 protein is labelled with Fc Tag.

## Product Details

Purpose:	Recombinant Mouse CD302/CLEC13A Protein (Fc Tag)
Sequence:	Met 1-His 156
Characteristics:	A DNA sequence encoding the extracellular domain of mouse CD302 isoform 2 (Q9DCG2-2) (Met 1-His 156) was fused with the Fc region of human IgG1 at the C-terminus.
Purity:	> 93 % as determined by SDS-PAGE
Endotoxin Level:	< 1.0 EU per µg of the protein as determined by the LAL method.

## Target Details

Target:	DCL1 (CD302)
Alternative Name:	CD302/CLEC13A ( <a href="#">CD302 Products</a> )
Background:	Background: CD302/CLEC13A (C-type lectin domain family 13 member A), also known as C-type lectin receptor DCL-1, is a type I transmembrane C-type lectin DCL-1/CD302. DCL-1 protein was highly conserved among the human, mouse, and rat orthologs. DCL-1 ectodomain

## Target Details

---

contains only one CRD, whereas other type I transmembrane C-type lectins contain more than one domain (e.g. selectins and MMR). DCL-1 CP contains several putative motifs, including a Tyr-based internalization, a cluster of acidic amino acids, and Ser and Tyr phosphorylation motifs, suggesting that DCL-1 CP mediates not only endocytosis and late endosome targeting but also signaling. DCL-1 may be another cell/matrix adhesion receptor integrated in cell adhesion complexes and that DCL-1 dysfunction may affect APC adhesion and migration, causing suppression of APC function.

Synonym: 1110055L24Rik,AI159627

---

Molecular Weight: 42.6 kDa

Pathways: [Regulation of Actin Filament Polymerization](#)

## Application Details

---

Restrictions: For Research Use only

## Handling

---

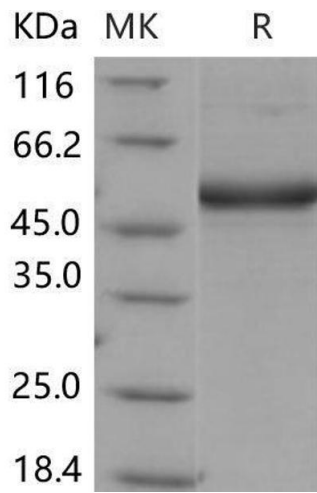
Format: Lyophilized

Reconstitution: Please refer to the printed manual for detailed information.

Buffer: Lyophilized from sterile PBS, pH 7.4

Storage: 4 °C,-20 °C,-80 °C

Storage Comment: Generally, lyophilized proteins are stable for up to 12 months when stored at -20 to -80°C. Reconstituted protein solution can be stored at 4-8°C for 2-7 days. Aliquots of reconstituted samples are stable at < -20°C for 3 months.



**Western Blotting**

**Image 1.**