

Datasheet for ABIN7320214
SLAMF8 Protein (His tag)[Go to Product page](#)

1 Image

Overview

Quantity:	100 µg
Target:	SLAMF8
Origin:	Mouse
Source:	HEK-293 Cells
Protein Type:	Recombinant
Biological Activity:	Active
Purification tag / Conjugate:	This SLAMF8 protein is labelled with His tag.

Product Details

Purpose:	Recombinant Mouse SLAMF8 Protein (His Tag)(Active)
Sequence:	Met 1-Asp 231
Characteristics:	A DNA sequence encoding the mouse SLAMF8 (NP_083360.2) extracellular domain (Met 1-Asp 231) was fused with the a polyhistidine tag at the C-terminus.
Purity:	> 80 % as determined by SDS-PAGE
Endotoxin Level:	< 1.0 EU per µg of the protein as determined by the LAL method.
Biological Activity Comment:	Measured by its ability to bind biotinylated mouse SLAMF8 in a functional ELISA.

Target Details

Target:	SLAMF8
Alternative Name:	SLAMF8 (SLAMF8 Products)

Target Details

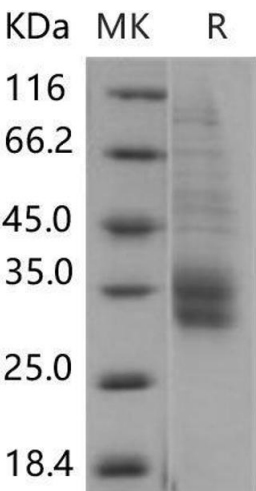
Background:	<p>Background: The signaling lymphocyte activation molecule (SLAM) family includes homophilic and heterophilic receptors that modulate both adaptive and innate immune responses. These receptors share a common ectodomain organization: a membrane-proximal immunoglobulin constant domain and a membrane-distal immunoglobulin variable domain that is responsible for ligand recognition. SLAM family of receptors is expressed by a wide range of immune cells. Through their cytoplasmic domain, SLAM family receptors associate with SLAM-associated protein (SAP)-related molecules, a group of cytoplasmic adaptors composed almost exclusively of an SRC homology 2 domain. SLAM family receptors, in association with SAP family adaptors, have crucial roles during normal immune reactions in innate and adaptive immune cells. Mouse SLAM family member 8, also known as B-lymphocyte activator macrophage expressed, BCM-like membrane protein, SLAMF8 and BLAME, is a single-pass type I membrane protein. It contains one Ig-like C2-type (immunoglobulin-like) domain. SLAMF8 / BLAME is expressed in lymph node, spleen, thymus and bone marrow. It may play a role in B-lineage commitment and/or modulation of signaling through the B-cell receptor.</p> <p>Synonym: SLAM family member 8; B-lymphocyte activator macrophage expressed; CD353; Slamf8; Blame;SBBI42</p>
Molecular Weight:	24.8 kDa
NCBI Accession:	NP_083360

Application Details

Restrictions:	For Research Use only
---------------	-----------------------

Handling

Format:	Lyophilized
Reconstitution:	Please refer to the printed manual for detailed information.
Buffer:	Lyophilized from sterile PBS, pH 7.4
Storage:	4 °C,-20 °C,-80 °C
Storage Comment:	<p>Generally, lyophilized proteins are stable for up to 12 months when stored at -20 to -80°C. Reconstituted protein solution can be stored at 4-8°C for 2-7 days. Aliquots of reconstituted samples are stable at < -20°C for 3 months.</p>



Western Blotting

Image 1.