

Datasheet for ABIN7320222  
**EpCAM Protein (His tag)**[Go to Product page](#)

## 1 Image

## Overview

Quantity:	100 µg
Target:	EpCAM (EPCAM)
Origin:	Mouse
Source:	HEK-293 Cells
Protein Type:	Recombinant
Purification tag / Conjugate:	This EpCAM protein is labelled with His tag.

## Product Details

Purpose:	Recombinant Mouse EpCAM/TROP-1 Protein (His Tag)
Sequence:	Met 1-Thr 266
Characteristics:	A DNA sequence encoding the extracellular domain of mouse EpCAM (NP_032558.2) (Met 1-Thr 266) was expressed, with a polyhistidine tag at the C-terminus.
Purity:	> 95 % as determined by SDS-PAGE
Endotoxin Level:	< 1.0 EU per µg of the protein as determined by the LAL method.

## Target Details

Target:	EpCAM (EPCAM)
Alternative Name:	EpCAM/TROP-1 ( <a href="#">EPCAM Products</a> )
Background:	Background: Epithelial Cell Adhesion Molecule (EpCAM), also known as GA733-2 antigen, is a type â... transmembrane glycoprotein composed of an extracellular domain with two EGF-Like repeats and a cystenin-rich region, a transmembrane domain and a cytoplasmic domain. It

## Target Details

modulates cell adhesion and proliferation. Its overexpression has been detected in many epithelial tumours and has been associated with high stage, high grade and a worse survival in some tumour types. EpCAM has been shown to function as a calcium-independent homophilic cell adhesion molecule that does not exhibit any obvious relationship to the four known cell adhesion molecule superfamilies. However, recent insights have revealed that EpCAM participates in not only cell adhesion, but also in proliferation, migration and differentiation of cells. In addition, recent study revealed that EpCAM is the Wnt-beta-catenin signaling target gene and may be used to facilitate prognosis. It has oncogenic potential and is activated by release of its intracellular domain, which can signal into the cell nucleus by engagement of elements of the wnt pathway.

Immune Checkpoint Immunotherapy Cancer Immunotherapy Targeted Therapy

Synonym: Neurotrophic tyrosine kinase receptor-related 1; receptor tyrosine kinase-like orphan receptor 1; ROR1; tyrosine-protein kinase transmembrane receptor ROR1; Epithelial cell adhesion molecule; Tumor-associated calcium signal transducer 1; TROP1; CD326; EGP; EGP-2; Egp314; Ep-CAM; EpCAM1; GA733-2; gp40; Ly74; Tacsd1; Tacstd1

Molecular Weight:	29 kDa
-------------------	--------

NCBI Accession:	<a href="#">NP_032558</a>
-----------------	---------------------------

## Application Details

Restrictions:	For Research Use only
---------------	-----------------------

## Handling

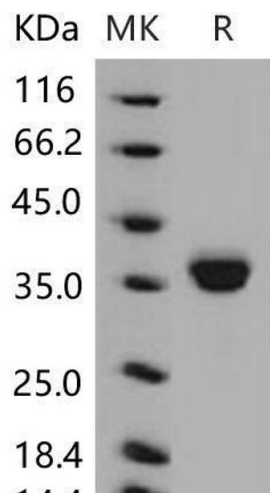
Format:	Lyophilized
---------	-------------

Reconstitution:	Please refer to the printed manual for detailed information.
-----------------	--

Buffer:	Lyophilized from sterile PBS, pH 7.4
---------	--------------------------------------

Storage:	4 °C, -20 °C, -80 °C
----------	----------------------

Storage Comment:	Generally, lyophilized proteins are stable for up to 12 months when stored at -20 to -80°C. Reconstituted protein solution can be stored at 4-8°C for 2-7 days. Aliquots of reconstituted samples are stable at < -20°C for 3 months.
------------------	---



Western Blotting

Image 1.