



[Go to Product page](#)

Datasheet for ABIN7320273

Prolactin Receptor Protein (PRLR) (His tag,Fc Tag)

1 Image

Overview

Quantity:	100 µg
Target:	Prolactin Receptor (PRLR)
Origin:	Mouse
Source:	HEK-293 Cells
Protein Type:	Recombinant
Purification tag / Conjugate:	This Prolactin Receptor protein is labelled with His tag,Fc Tag.

Product Details

Purpose:	Recombinant Mouse PRLR/Prolactin Receptor Protein (His & Fc Tag)
Sequence:	Met 1-Asp 229
Characteristics:	A DNA sequence encoding the extracellular domain of mouse PRLR (NP_035299.4) (Met 1-Asp 229) was fused with the C-terminal polyhistidine-tagged Fc region of human IgG1 at the C-terminus.
Purity:	> 90 % as determined by SDS-PAGE
Endotoxin Level:	< 1.0 EU per µg of the protein as determined by the LAL method.

Target Details

Target:	Prolactin Receptor (PRLR)
Alternative Name:	PRLR/Prolactin Receptor (PRLR Products)
Background:	Background: Prolactin receptor (PRLR) is a single-pass transmembrane receptor belonging to the type â€¦ cytokine receptor superfamily, and contains two fibronectin type-â€¦ domains. All

Target Details

class 1 ligands activate their respective receptors by clustering mechanisms. Ligand binding results in the transmembrane PRLR dimerization, followed by phosphorylation and activation of the molecules involved in the signaling pathways, such as Jak-STAT, Ras/Raf/MAPK. The PRLR contains no intrinsic tyrosine kinase cytoplasmic domain but associates with a cytoplasmic tyrosine kinase, JAK2. PRLR mainly serves as the receptor for the pituitary hormone prolactin (PRL), a secreted hormone that affects reproduction and homeostasis in vertebrates. PRLR can be regulated by an interplay of two different mechanisms, PRL or ovarian steroid hormones independently or in combination in a tissue-specific manner. The role of the hormone prolactin (PRL) in the pathogenesis of breast cancer is mediated by its cognate receptor (PRLR). Ubiquitin-dependent degradation of the PRLR that negatively regulates PRL signaling is triggered by PRL-mediated phosphorylation of PRLR on Ser349 followed by the recruitment of the beta-transducin repeats-containing protein (beta-TrCP) ubiquitin-protein isopeptide ligase. which altered PRLR stability may directly influence the pathogenesis of breast cancer.

Synonym: Prolactin receptor; PRL-R; Prlr; Prolactin R; PRLR;Pr-1;Pr-3;Prlr;Prlr-rs1

Molecular Weight: 52.5 kDa

NCBI Accession: [NP_035299](#)

Pathways: [JAK-STAT Signaling, Response to Growth Hormone Stimulus](#)

Application Details

Restrictions: For Research Use only

Handling

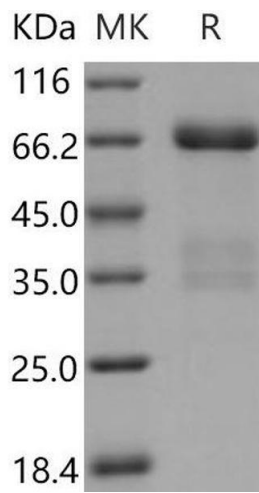
Format: Lyophilized

Reconstitution: Please refer to the printed manual for detailed information.

Buffer: Lyophilized from sterile PBS, pH 7.4

Storage: 4 °C,-20 °C,-80 °C

Storage Comment: Generally, lyophilized proteins are stable for up to 12 months when stored at -20 to -80°C. Reconstituted protein solution can be stored at 4-8°C for 2-7 days. Aliquots of reconstituted samples are stable at < -20°C for 3 months.



Western Blotting

Image 1.