

Datasheet for ABIN7320335
PPM1A Protein (His tag)[Go to Product page](#)

1 Image

Overview

Quantity:	100 µg
Target:	PPM1A
Origin:	Mouse
Source:	Escherichia coli (E. coli)
Protein Type:	Recombinant
Purification tag / Conjugate:	This PPM1A protein is labelled with His tag.

Product Details

Purpose:	Recombinant Mouse PPM1A Protein (His Tag)
Sequence:	Met 1-Trp 382
Characteristics:	A DNA sequence encoding the mouse PPM1A (NP_032936.1) (Met 1-Trp 382) was expressed, with a polyhistidine tag at the C-terminus.
Purity:	> 98 % as determined by SDS-PAGE

Target Details

Target:	PPM1A
Alternative Name:	PPM1A (PPM1A Products)
Background:	Background: Protein phosphatase 1A (PPM1A / PP2CA) is an enzyme belonging to the PP2C family of Ser / Thr protein phosphatases. Members of PP2C family are negative regulators of cell stress response pathways and the MAP kinases and MAP kinase kinases. It has also been demonstrated to inhibit the activation of p38 and JNK kinase cascades. PPM1A

Target Details

dephosphorylates and promotes nuclear export of TGFβ-activated Smad2/3. Ectopic expression of PPM1A abolishes TGFβ-induced antiproliferative and transcriptional responses, whereas depletion of PPM1A enhances TGFβ signaling in mammalian cells. It has been demonstrated that PPM1A / PP2CA, through dephosphorylation of Smad2/3, plays a critical role in terminating TGFβ signaling. Overexpression of PPM1A is reported to activate the expression of the tumor suppressor gene TP53 / p53, which leads to cell apoptosis.

Synonym: 2310003C21Rik;2900017D14Rik;AI427932;AU017636;MMPa-2;MPPa-1

Molecular Weight: 43.3 kDa

NCBI Accession: [NP_032936](#)

Application Details

Restrictions: For Research Use only

Handling

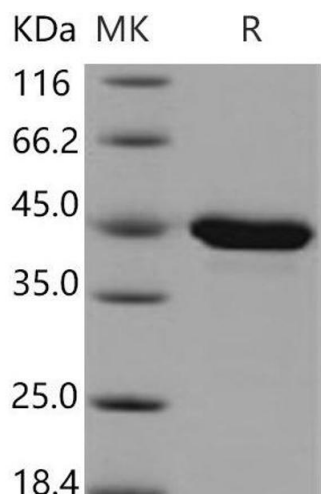
Format: Lyophilized

Reconstitution: Please refer to the printed manual for detailed information.

Buffer: Lyophilized from sterile 10 mM HEPES, 500 NaCl, pH 7.5

Storage: 4 °C,-20 °C,-80 °C

Storage Comment: Generally, lyophilized proteins are stable for up to 12 months when stored at -20 to -80°C. Reconstituted protein solution can be stored at 4-8°C for 2-7 days. Aliquots of reconstituted samples are stable at < -20°C for 3 months.



Western Blotting

Image 1.