

Datasheet for ABIN7320336  
**SLAMF6 Protein (His tag)**[Go to Product page](#)

## 1 Image

## Overview

Quantity:	100 µg
Target:	SLAMF6
Origin:	Mouse
Source:	HEK-293 Cells
Protein Type:	Recombinant
Biological Activity:	Active
Purification tag / Conjugate:	This SLAMF6 protein is labelled with His tag.

## Product Details

Purpose:	Recombinant Mouse SLAMF6/Ly108 Protein (His Tag)(Active)
Sequence:	Met 1-Asn 239
Characteristics:	A DNA sequence encoding the mouse SLAMF6 (NP_109635.1) extracellular domain (Met 1-Asn 239) was fused with a polyhistidine tag at the C-terminus.
Purity:	> 95 % as determined by SDS-PAGE
Endotoxin Level:	< 1.0 EU per µg of the protein as determined by the LAL method.
Biological Activity Comment:	Measured by its ability to bind biotinylated recombinant human SH2D1A in a functional ELISA.

## Target Details

Target:	SLAMF6
Alternative Name:	SLAMF6/Ly108 ( <a href="#">SLAMF6 Products</a> )

## Target Details

Background:	<p>Background: SLAM family member 6, also known as Activating NK receptor, NK-T-B-antigen, NTB-A, SLAMF6, KALI and Ly108, is a single-pass type I membrane protein which belongs to the CD2 subfamily of the immunoglobulin superfamily. SLAMF6 / Ly108 contains one Ig-like (immunoglobulin-like) domain. It is expressed by all (resting and activated) natural killer cells (NK), T- and B-lymphocytes. SLAMF6 / Ly108 triggers cytolytic activity only in natural killer cells (NK) expressing high surface densities of natural cytotoxicity receptors. SLAMF6 / Ly108 is a homodimer. It interacts with PTN6 and, upon phosphorylation, with PTN11 and SH2D1A/SAP. SLAMF6 / Ly108 undergoes tyrosine phosphorylation and associates with the Src homology 2 domain-containing protein (SH2D1A) as well as with SH2 domain-containing phosphatases (SHPs). It may function as a coreceptor in the process of NK cell activation. SLAMF6 / Ly108 can also mediate inhibitory signals in NK cells from X-linked lymphoproliferative patients.</p> <p>Synonym: KAL1,KAL1b,Ly108,NTB-A,NTBA,SF2000</p>
-------------	---

Molecular Weight:	24.4 kD
-------------------	---------

NCBI Accession:	<a href="#">NP_109635</a>
-----------------	---------------------------

## Application Details

Restrictions:	For Research Use only
---------------	-----------------------

## Handling

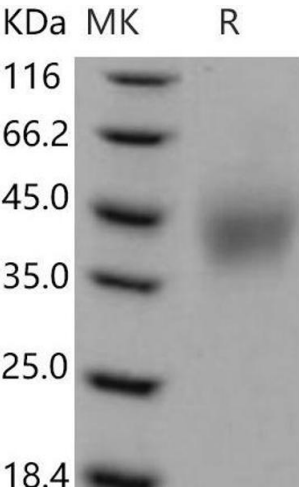
Format:	Lyophilized
---------	-------------

Reconstitution:	Please refer to the printed manual for detailed information.
-----------------	--

Buffer:	Lyophilized from sterile PBS, pH 7.4
---------	--------------------------------------

Storage:	4 °C,-20 °C,-80 °C
----------	--------------------

Storage Comment:	<p>Generally, lyophilized proteins are stable for up to 12 months when stored at -20 to -80°C. Reconstituted protein solution can be stored at 4-8°C for 2-7 days. Aliquots of reconstituted samples are stable at &lt; -20°C for 3 months.</p>
------------------	---



**Western Blotting**

**Image 1.**